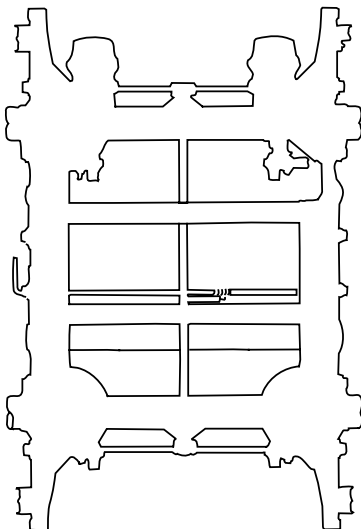
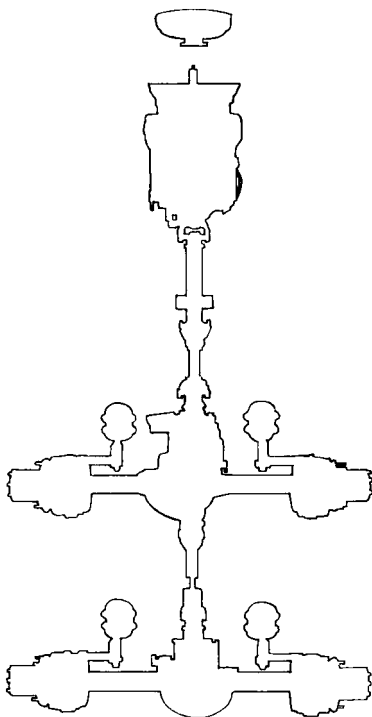
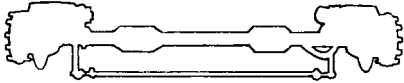


Linehaul

Warranty Information



Linehaul Vehicles Include:

- | | |
|------------------------|---------------|
| ■ Refrigerated Freight | ■ Triples |
| ■ General Freight | ■ Bulk Hauler |
| ■ Livestock Hauler | ■ Auto Hauler |
| ■ Grain Hauler | ■ Flatbed |
| ■ Tanker | ■ Moving Van |
| ■ Doubles | ■ Pipe Hauler |

Linehaul Is:

- Moving different types of freight.
- High mileage operation (over 60,000 miles/year).
- Operation on road surfaces made of concrete, asphalt, maintained gravel, crushed rock, hard packed dirt or other similar surfaces.
- Greater than 30 miles between starting and stopping.
- Duty I and II Classification – Maximum grades 8 percent.
- Duty III Classification – Turnpike maximum grades 3 percent.
- The vehicle may use a single retarder (engine, exhaust, transmission, chassis or axle mounted).
- Vehicles using multiple retarders are not covered by this guideline.

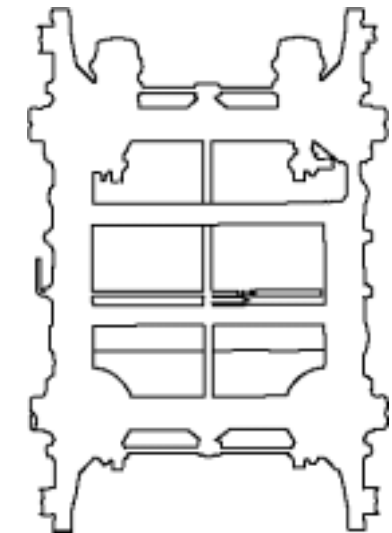
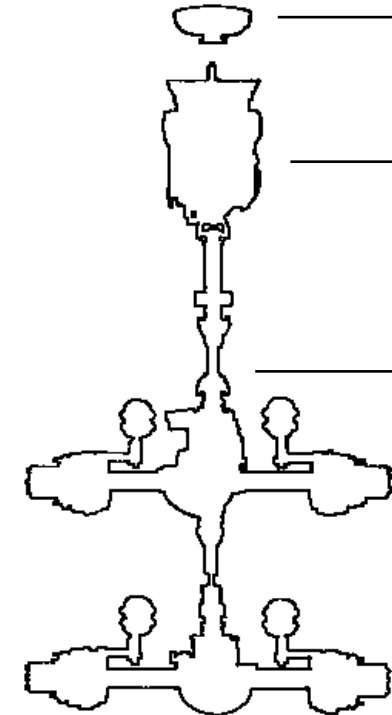
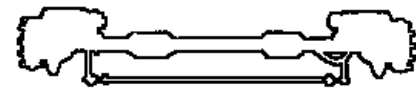
Refer to publication TP-9441 for Vocational Guidelines on axle applications. Products not listed require axle applications approval. Contact ArvinMeritor Axle Applications Engineering.

How to Read Warranty Coverage:

Number of Years / Mileage (in thousands) / P=Parts Only
 Unl=Unlimited / P&L=Parts & Labor

Linehaul Warranty Information

Models or components that are approved for use by ArvinMeritor's vocational guidelines contained in ArvinMeritor Publication TP-9441, which are not specifically listed below, are warranted for one year, unlimited miles, parts only (1/Unl/P).



Clutches¹

14"HD Twin Plate	1/100/P
15.5"HD Clutch	3/300/P ^{2,3}
17" HD Clutch	3/300/P ^{2,3}

¹ Warranted by Meritor Clutch Company.
² Multiple engine retarders are not approvable.
³ First year P&L.

ZF Meritor™ Transmissions

9-, 10-, 12- & 16-Speed	5/750/P&L ^{1,2,3}
13-Speed	5/500/P&L ^{1,2}

¹ With approved synthetic lube (Without = 3/300/P&L).
² Multiple engine retarders are not approvable.
³ Electronic shift systems 3/300/P&L.

Drivelines

RPL	3/350/P ^{1,2}
92N	1/Unl/P ²
RN	1/Unl/P ²

¹ First year P&L.
² Multiple engine retarders are not approvable.

Gabriel Shock Absorbers

1/100/P

Meritor® Tire Inflation System by PSI

3/500/P&L

Highway Parallelogram Air Suspension System

RHP-11 ¹	5/500/P ^{2,3,4} (Major structural components and bushings)
---------------------	---

¹ Used on van-type (dry, refrigerated) trailers with close spaced, sliding tandems.
² Warranty includes P&L for year 1. Years 2-5 are parts only.
³ For axle and ABS coverage, refer to appropriate product warranties.
⁴ Air controls 1/100/P&L and shock absorbers 2/200/P&L; air springs 2/200. Year 1 = P&L. Year 2 = Parts Only.

Front Non-Drive Steer Axles

FD-965	2/Unl/P&L ²	FF-981	5/750/P&L ^{1,2}	MFS-10-143A-N	2/Unl/P&L ²
FF-941	5/750/P&L ²	FF-982	5/750/P&L ^{1,2}	MFS-10-144A-N	2/Unl/P&L ²
FF-942	5/750/P&L ²	FF-983	5/750/P&L ^{1,2}	MFS-12-143A-N	5/750/P&L ²
FF-943	5/750/P&L ²	FF-984	5/750/P&L ^{1,2}	MFS-12-144A-N	5/750/P&L ²
FF-944	5/750/P&L ²	FF-986	5/750/P&L ^{1,2}	MFS-13-143A-N	5/750/P&L ²
FF-961	5/750/P&L ²	FF-987	5/750/P&L ^{1,2}	MFS-13-144A-N	5/750/P&L ²
FF-966	5/750/P&L ²	FG-941	5/500/P&L ²	MFS-14-143A-N	5/500/P&L ²
FF-967	5/750/P&L ²	FG-943	5/500/P&L ²	MFS-10-143D-N	2/Unl/P&L ^{1,2}
				MFS-12-144D-N	2/Unl/P&L ^{1,2}

¹ Includes: hub, wheel seals and wheel bearings.
² Tie rod and tie rod ends 3/300/P&L.

Meritor WABCO Components¹

ABS (Anti-Lock Braking System)	3/300/P&L
ATC (Automatic Traction Control)	3/300/P&L
Single Air Dryer	3/300/P&L
TWIN Air Dryer	1/100/P&L
Leveling Valves	1/Unl/P&L
Air Brake Valves	1/Unl/P
Single Cylinder Air Compressor	2/Unl/P&L ²

¹ Warranted by Meritor WABCO Vehicle Control Systems.
² For Meritor WABCO compressors installed on Cummins engines, contact your Cummins distributor for warranty and service.

Rear Drive Single Axles

MS-23-164DE-N ⁸	5/750/P&L ^{1,2,9}
MS-23-185DE-N ⁸	5/750/P&L ^{1,2,9}
RS-19-144/145/A	2/Unl/P&L
RS-21-145	2/Unl/P&L
RS-21-160	2/Unl/P&L ²
RS-23-160/A	5/750/P&L ^{1,2}
RS-23-161/A	5/750/P&L ^{1,2}
RS-23-186	5/750/P&L ^{1,2}

¹ With approved Advanced Lube Program (see publication TP-9303 for details). Without = 3/Unl/P&L.
² Not approvable with engines over 1,850 lb-ft torque ratings used in this vocation.
³ 80,000 lbs. Max GCW with 1,850 lb-ft torque engines with one retarder.
⁴ Not approvable with 1,850 lb-ft torque engines with two retardation devices.

Rear Drive Tandem Axles

RT-34-144/P/A	5/750/P&L ^{1,2,3,4}	MT-34-143DE-N	5/750/P&L ^{1,2,3,4,8,9}
RT-40-145/149 ⁷ /P/A	5/750/P&L ^{1,2,3,4}	MT-40-143DE-N	5/750/P&L ^{1,2,3,4,8,9}
RT-40-160/169 ⁷ /P/A	5/750/P&L ^{1,5,6}	MT-40-164DE-N	5/750/P&L ^{1,5,6,9}
RT-46-160/169 ⁷ /P/A	5/750/P&L ^{1,5,6}	MT-40-143MA-N	5/750/P&L ^{1,2,3,4,8}
RT-46-164EH/16H ⁷ /P/A	5/750/P&L ^{1,5,6}	MT-40-943DA-N ^{7,8}	5/750/P&L ^{1,2,3,4}
RT-50-160/P/A	5/750/P&L ^{1,5,6}	MT-40-964DA-N ^{7,8}	5/750/P&L ^{1,5,6}
		MT-46-965DA-N ^{7,8}	5/750/P&L ^{1,5,6}
		MT-46-968DA-N ^{7,8}	5/750/P&L ^{1,5,6}

⁵ Axle warranty for vehicles equipped with engines over 1,850 lb-ft torque ratings used in this vocation with one retarder is reduced to 3/300/P&L.
⁶ Axle warranty for vehicles equipped with engines over 1,850 lb-ft torque ratings used in this vocation with two retarders is reduced to 1/Unl/P&L.
⁷ For warranty coverage application requirements for tandem axles with Cummins Torque Controlled engines, refer to TP-9903A (Revised 7-00).

⁸ Axle model designation will vary according to options and variations specified on these axles. Contact ArvinMeritor Axle Applications Engineering for details.
⁹ Includes hub, wheel seals and wheel bearings.

Trailer Axles

TB, TN, TP, TQ, TR	5/500/P*
--------------------	----------

* Wheel-end equipment coverage on Meritor assembled axles for one year/parts only, except TB. Coverage extends to 5/500 for unitized hub feature on TB axles.

Brake Components

Cam Q Plus™	5/750/P&L
Cam P, ADB	5/500/P ¹
DiscPlus™	5/750/P ¹
ASA	5/500/P ¹
Hubs/Cast Drums and Other Wheel-end Components	1/Unl/P
Hydraulic Disc Brakes	1/Unl/P
All Other Brakes	1/Unl/P
LX500 Feature ²	3/500/P&L
MX500 Feature ^{3,5}	3/500/P&L
SteelLite X30™ Drums ⁴	Wearable Life/P

¹ First year P&L.
² Includes: bushings, seals, cams and ASA.
³ Includes: bushings, seals, cams and ASA, plus lining wear.
⁴ Based on stamped wear diameter max.
⁵ Includes: bushings, seals, cams, ASA, lining wear and drum wear for trailer.



Warranty Information

(1) What is Covered by this Commercial Warranty? ArvinMeritor Inc. warrants to the owner ("Owner") that the components listed in this publication, which have been installed by an Original Equipment Manufacturer ("OEM") as original equipment in vehicles licensed for on-highway use, will be free from defects in material and workmanship. This warranty coverage begins only after the expiration of the OEM's vehicle warranty for the applicable covered components. Warranty coverage ends at the expiration of the applicable time period from the date of vehicle purchase by the first Owner, or, the applicable mileage limitation, whichever occurs first. Duration of coverage varies by component and vocation as detailed elsewhere in this warranty statement.

Some components are warranted for parts only and the Owner must pay any labor costs associated with the repair or replacement of the component. Other components are warranted for both parts and reasonable labor to repair or replace the subject component. Components (whether new, used or remanufactured) installed as replacements under this warranty are warranted only for the remainder of the original period of time or mileage under the original warranty.

For certain components, coverage requires the use of specific extended drain interval or synthetic lubricants. For further information about lubrication and maintenance, see ArvinMeritor publication Maintenance Manual Number I and the applicable ArvinMeritor maintenance manual for the product in question. Other conditions and limitations applicable to this warranty are detailed below.

(2) Designation of Vocational Use Required. To obtain warranty coverage, each Owner must notify ArvinMeritor through the OEM new truck and/or trailer dealer of the intended vocational use of the vehicle into which the ArvinMeritor components have been incorporated prior to the vehicle in-service date. This notification may be accomplished by registering the vehicle through your OEM new truck and/or trailer dealer or with ArvinMeritor directly. Failure to notify ArvinMeritor of (I) the intended vocational use of the vehicle or (II) a change in vocational use from that which was originally designated, will result in the application of a one year, unlimited mileage, parts only warranty (1/Unl/P) from the initial in-service date.

A second Owner and each subsequent Owner must also notify ArvinMeritor as to the intended vocational use of the vehicle. This notification can be sent directly to ArvinMeritor or through the OEM new truck and/or trailer dealer. The duration and mileage coverage of this warranty cannot exceed the coverage extended to the first Owner after his or her initial designation of vocational use.

ArvinMeritor's vocational guidelines are contained in ArvinMeritor publication TP-9441. Prior ArvinMeritor engineering application approval will be required for vehicle applications that fall outside these vocational guidelines. If you have questions with respect to the designation of a specific vocational use, contact your local OEM new truck and/or trailer dealer or ArvinMeritor representative.

(3) What is the Cost of this Warranty? There is no charge to the Owner for this warranty.

(4) What is not Covered by this Warranty? This warranty does not cover normal wear and tear; nor does it cover a component that fails, malfunctions or is damaged as a result of (I) improper installation, adjustment, repair or modification (including the use of unauthorized attachments or changes or modification in the vehicle's configuration, usage, or vocation from that which was originally approved by ArvinMeritor), (II) accident, natural disaster, abuse, or improper use (including loading beyond the specified maximum vehicle weight or altering engine power settings to exceed the transmission, axle, driveline, and/or clutch torque capacity), or (III) improper or insufficient maintenance (including deviation from approved lubricants, change intervals, or lube levels). This warranty does not cover any component or part that is not sold by ArvinMeritor. For vehicles that operate full or part time outside of the United States and Canada, a one-year, unlimited mileage, parts only warranty (1/Unl/P) will apply.

Coverage Exclusions:

Product	Description
All:	The cost of any repairs, replacements or adjustments to a covered component (1) associated with noise; (2) resulting from the use or installation of non-genuine ArvinMeritor components or materials; and (3) due to vibration associated with improper operation or misapplication of drivetrain components.
Front Axles:	Bushings, wheel end equipment, wheel seals.
Rear Axles:	Self-contained traction equalizers, oil filters, wheel end seals/gaskets. The use of NoSPIN differentials will result in the exclusion of axle shafts from warranty considerations. NoSPIN is a product of Tractech Inc.
Clutch:	Friction face and mating surface of center and pressure plate, wear pad and bearing, clutch brake.
ASA:	Boot and bushing.

Coverage Limitations:

Product	Description
Rear Axles:	Pinion and through shaft seals limited to 3-year/ 300,000-miles or published vocational coverage, whichever is less, if yoke is installed by ArvinMeritor.
Cam Brake:	Limited to bracket, brake spider, and camshaft.
MX500 Trailer Brake:	3-year/500,000-mile warranty terms are limited to on-highway linehaul single van applications only. Engine brake and dust covers are required. Tractor hand valves must not be used with these trailers. Coverage does not apply in Canada. Limited to one lining and drum replacement only.
Disc Brake:	Limited to torque plate, chamber bracket, and caliper (less bushings, boot).
Transmissions:	3-year/300,000-mile or published vocational coverage on seals, whichever is less, if yoke is installed by ArvinMeritor. Approved synthetic lube required for extended coverage.

Warranty coverage on vehicles with 1,850 lb-ft engine torque and over may be reduced on individual drivetrain components. Contact your ArvinMeritor representative for specific details.

(5) Remedy. The exclusive remedy under this warranty shall be the repair or replacement of the defective component at ArvinMeritor's option. ArvinMeritor reserves the right to require that all applicable failed materials are available and/or returned to ArvinMeritor for review and evaluation.

(6) Disclaimer of Warranty.

THIS WARRANTY IS EXPRESSLY IN LIEU OF ALL OTHER WARRANTIES OR CONDITIONS, EXPRESSED, IMPLIED OR STATUTORY INCLUDING ANY IMPLIED WARRANTY OF MERCHANTABILITY OR FITNESS FOR PARTICULAR PURPOSE.

(7) Limitation of Remedies. In no event shall ArvinMeritor be liable for special, incidental, indirect, or consequential damages of any kind or under any legal theory, including, but not limited to, towing, downtime, lost productivity, cargo damage, taxes, or any other losses or costs resulting from a defective covered component.

(8) To Obtain Service. If the Owner discovers within the applicable coverage period a defect in material or workmanship, the Owner must promptly give notice to either ArvinMeritor or the dealer from which the vehicle was purchased. To obtain service, the vehicle must be taken to any participating OEM new truck and/or trailer dealer or authorized ArvinMeritor service location. The dealer will inspect the vehicle and contact ArvinMeritor for an evaluation of the claim. When authorized by ArvinMeritor, the dealer will repair or replace during the term of this warranty any defective ArvinMeritor component covered by this warranty.

(9) Entire Agreement. This is the entire agreement between ArvinMeritor and the Owner about warranty and no ArvinMeritor employee or dealer is authorized to make any additional warranty on behalf of ArvinMeritor. This agreement allocates the responsibilities for component failure between ArvinMeritor and the Owner.