

**Brought to you by Pro Gear &  
Transmission.**

**For parts or service call:**

**877-776-4600  
407-872-1901**



**[www.globaldifferentialsupply.com](http://www.globaldifferentialsupply.com)**

**906 W. Gore St. Orlando, FL 32805  
[parts@eprogear.com](mailto:parts@eprogear.com)**



# **SDA-2100 STEERABLE DRIVE AXLE PARTS MANUAL**

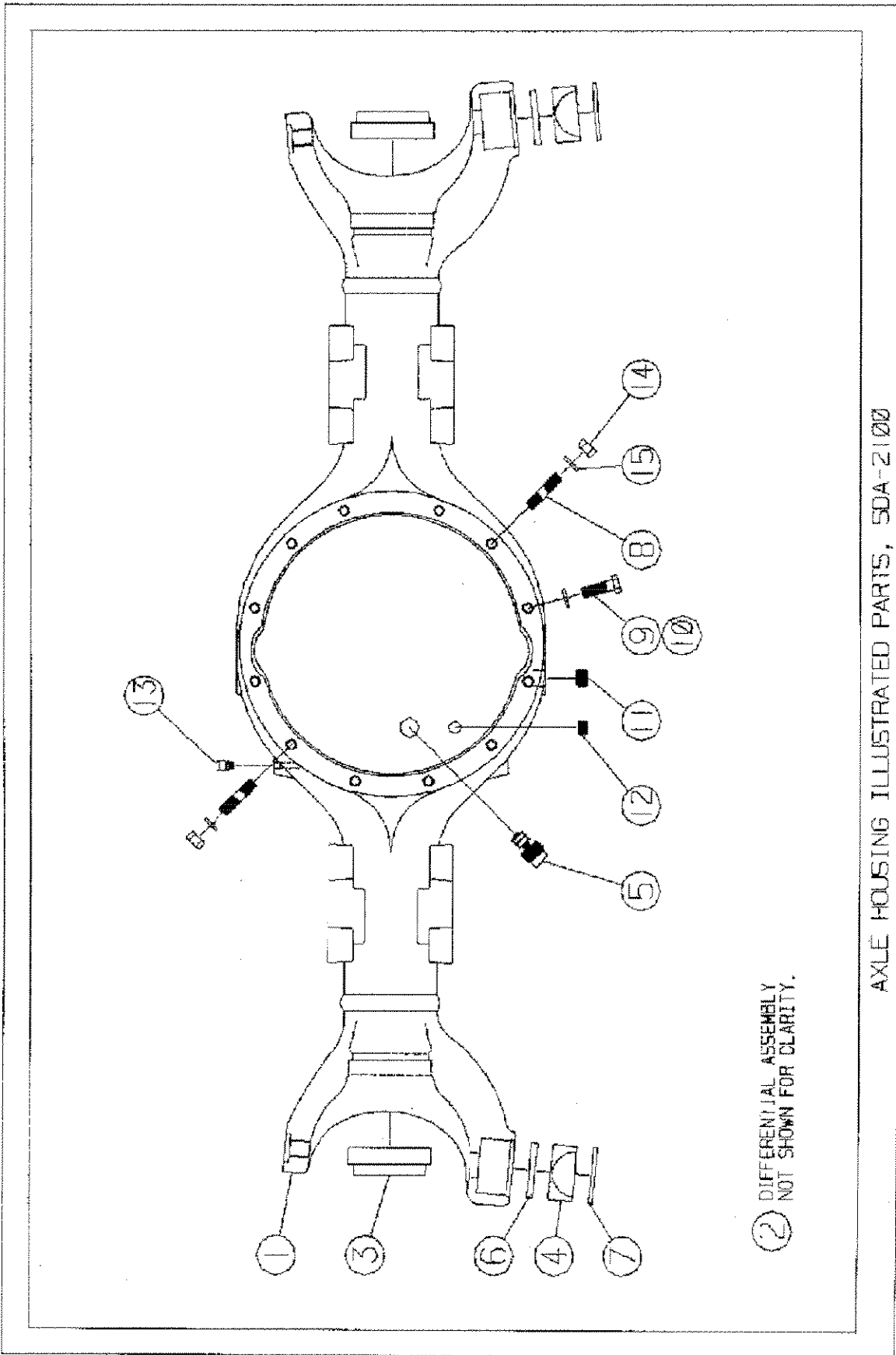
## 10.0 ILLUSTRATED PARTS MANUAL – SDA-2100

	PAGE
Axle Housing Illustrated Parts.....	44
Axle Housing Parts List.....	45
Steerable Drive End Illustrated Parts.....	46
Steerable Drive End Parts List.....	47
Brake Illustrated Parts .....	49
Brake Parts List .....	50
Universal-Joint Illustrated Parts .....	51
Universal-Joint Parts List .....	52
Tie Rod Illustrated Parts .....	53
Tie Rod Parts List .....	54

### TO USE THIS MANUAL:

1. Refer to the exploded view which illustrates the needed part.
2. Find the required part(s) and note the item number(s).
3. Locate the item number(s) in the parts list for part number, description and quantity.
4. Before ordering parts for a Fabco axle, please refer to the name plate located on the left rear of the axle housing for serial number, part number and ratio.

Part numbers contained in this manual were in effect at the time the manual was approved for printing and are subject to change without notice or liability. Fabco reserves the right to change parts at anytime.

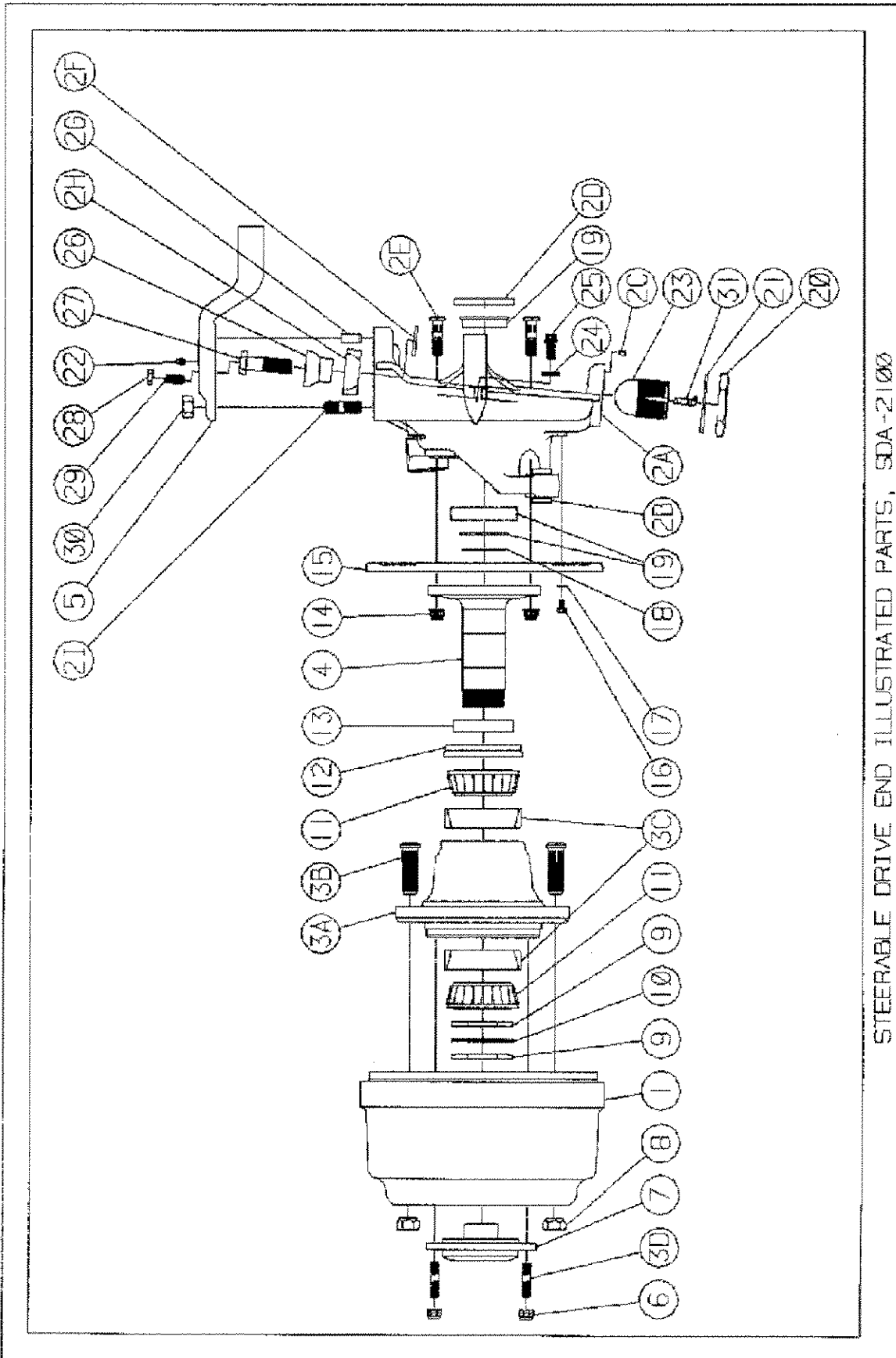


AXLE HOUSING ILLUSTRATED PARTS, SDA-2100

## AXLE HOUSING PARTS LIST, SDA-2100

<u>ITEM</u>	<u>PART NUMBER</u>	<u>DESCRIPTION</u>	<u>QTY/AXLE</u>
1	475-0286-XXX	Axle Housing Assembly	1
2	343-0021-XXX	Differential Assembly *	1
3	732-0310	Seal Assembly, Inner Axle	2
4	234-0472	Bearing, Lower Kingpin	2
5	758-0369	Fill Plug, 1" NPT Magnetic	1
6	793-0488	Plate, Lower Kingpin Bearing	2
7	732-0446	Seal, Lower King pin Grease	2
8	788-0553-002	Stud, Differential Assembly & Drive Flange	18
9	265-0222	Bolt, 5/9-11 x 2 Grade 5 HH	4
10	265-0223	Bolt, 5/8-11 x 1 3/4 Grade 5 HH	6
11	758-0274	Drain Plug, 3/4 NPT Magnetic	1
12	758-0293	Temperature Sensor Plug, 1/2 NPT	1
13	836-0222	Vent, Axle Housing	1
14	688-0265	Nut, Differential Carrier Mounting	2
15	927-0276	Lockwasher, Differential Mounting	12

*DIFFERENTIAL ASSEMBLY:	<u>PART NO.</u>	<u>RATIO</u>
	343-0021-001	3.90
	343-0021-002	4.11
	343-0021-003	4.33
	343-0021-004	4.56
	343-0021-005	4.88
	343-0021-006	5.29
	343-0021-007	5.57
	343-0021-008	6.14
	343-0021-009	6.57
	343-0021-010	7.17



STEERABLE DRIVE END ILLUSTRATED PARTS, SDA-2100

## STEERABLE END PARTS LIST, SDA-2100

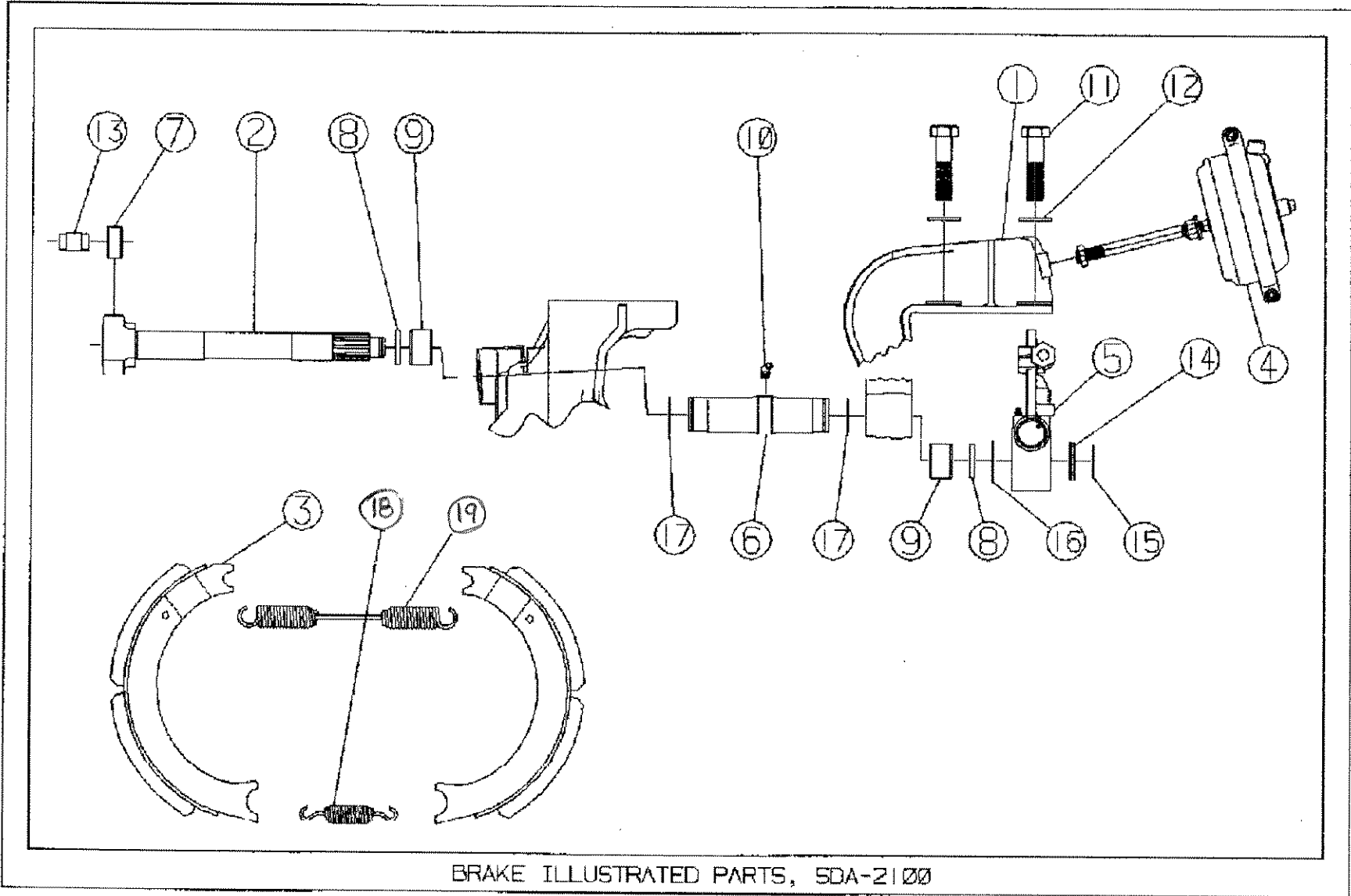
<u>ITEM</u>	<u>PART NUMBER</u>	<u>DESCRIPTION</u>	<u>QTY/AXLE</u>
1	378-0325	Brake Drum	2
2	964-1232 XXX	Spindle Yoke Assembly, Left	1
	964-1233 XXX	Spindle Yoke Assembly, Right	1
A	964 -0232 XXX	Yoke, Left	1
	964 -0233 XXX	Yoke, Right	1
B	746-0746	Pin, Brake Anchor	2
C	746-0742	Dowel Pin, Kingpin Lock washer	2
D	732-0449	Seal, Wheel End Inner	2
E	788-0569-002	Stud, Spindle Mounting	20
F	732-0447	Seal, Upper Kingpin Grease	2
G	746-0747	Dowel Pin, Steering Arm	2
H	234-0473	Bearing, Upper Kingpin	2
I	788-0563-002	Stud, Steering Arm Mounting	4
3	482-0066-001	Wheel Hub Assembly, LH	1
	482-0066-002	Wheel Hub Assembly, RH	1
A	482-0389	Hub, 13 3/16 Bolt Circle	2
	482-0387	Hub, 11 1/4 Bolt Circle	2
B	788-0567-001	Stud, Wheel, LH, Short Studs	10
	788-0567-002	Stud, Wheel, RH, Short Studs	10
	788-0567-003	Stud, Wheel, LH, Long Studs	10
	788-0567-004	Stud, Wheel, RH, Long Studs	10
C	233-0462	Bearing Cup, Wheel	4
D	788-0553-002	Stud, Drive Flange	8
4	774-0322	Spindle	2
5	276-0942-XXX	Steering Arm, RH & LH	2
6	688-0292	Nut, Drive Flange	16
7	352-1527	Drive Flange	2
8	688-0259	Wheel Nut, RH	10
	688-0262	Wheel Nut, LH	10

## STEERABLE END PARTS LIST, SDA-2100 CONT'D.

<u>ITEM</u>	<u>PART NUMBER</u>	<u>DESCRIPTION</u>	<u>QTY/AXLE</u>
9	688-0699	Nut, Wheel Bearing Adjustment	4
10	927-0769	Lockwasher, Wheel Bearing	2
11	233-0459	Bearing Cone, Wheel	4
12	732-0373	Seal, Wheel Hub	2
13	736-0967	Ring, Hub Seal	2
14	688-0755	Nut, Spindle Mounting	20
15	772-0272	Dust Shield, Brake	2
16	265-0322	Bolt, 3/8-16 x 3/4, Grade 5 HH	8
17	927-0748	Lockwasher, Brake Dust Shield	8
18	762-0246	Snap Ring, Drive Yoke Bearing Retaining	2
19	233-0588	Bearing Assembly, Yoke Shaft	2
20	688-0754	Nut, Lower Kingpin Locking	2
21	927-0858	Lockwasher, Lower Kingpin	2
22	358-0222	Grease Fitting, 1/8 NPT	2
23	225-0295	Ball Stud, Lower Kingpin	2
24	927-0468	Washer, Steering Stop Adjusting *	A/R
25	724-0625	Screw, Steering Stop	2
26	225-0294	Ball Stud, Upper Kingpin	2
27	283-0254	Bolt, Upper Kingpin, Special	2
28	688-0636	Nut, Kingpin Adjustment Jam	2
29	724-0723	Set Screw, Kingpin Adjustment	2
30	688-0737	Nut, Steering Arm	4
31	358-0234	Grease Fitting, 1/8 NPT 65°	2

\* Use quantity as required to obtain 35° maximum turn angle.



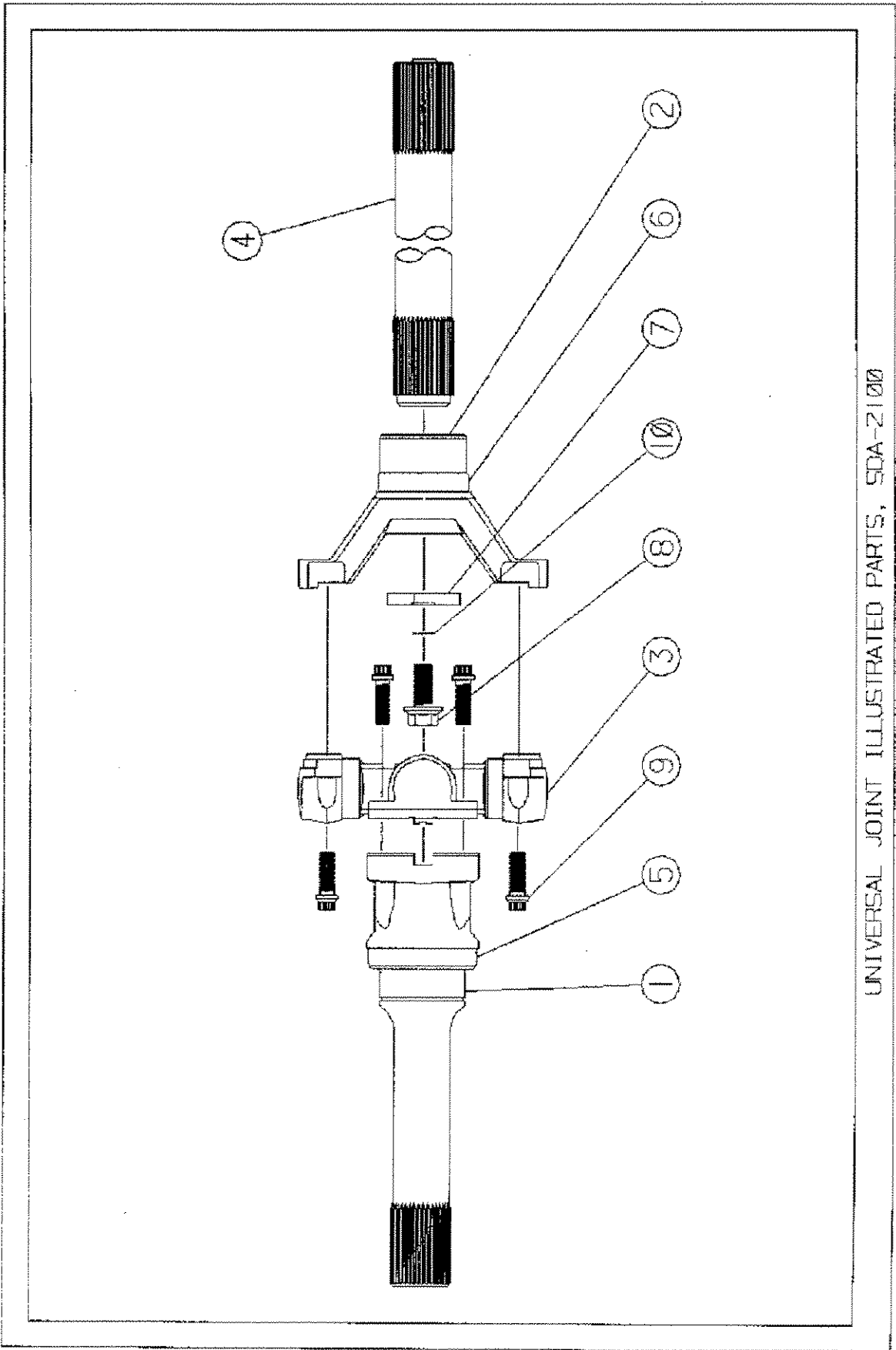


BRAKE ILLUSTRATED PARTS, SDA-2100

## BRAKE PARTS LIST, SDA-2100

<u>ITEM</u>	<u>PART NUMBER</u>	<u>DESCRIPTION</u>	<u>QTY/AXLE</u>
1	273-1827 273-1828	Bracket As sem bly, Air Cham ber, LH Bracket As sem bly, Air Cham ber, RH	1 1
2	226-0238 226-0239	Camshaft, LH Camshaft, RH	1 1
3	743-0265	Brake Shoe & Lining Assembly	4
4	243-0030-001	Air Brake Chamber	2
5	538-0477 538-0478	Slack Ad juster As sem bly, LH Slack Ad juster As sem bly, RH	1 1
6	884-0279	Tube, Cam shaft	2
7	765-0286	Roller, S-cam	4
8	732-0436	Seal, Camshaft	4
9	287-0279	Bushing, Camshaft	4
10	358-0223	Grease Fit ting, 1/8 NPT 45°	2
11	283-0256	Bolt, Air Chamber Bracket, Spe cial	4
12	927-0852	Washer, Air Chamber Bracket	4
13	746-0743	Pin, S- cam Roller	4
14	927-0848 927-0849	Washer, .031 Thick Cam shaft* Washer, .059 Thick Cam shaft*	A/R A/R
15	762-0343	Snap Ring, Camshaft	2
16	927-0847	Washer, Slack Ad juster, In ner	2
17	675-0031	O-Ring, Camshaft Tube	4
18	777-0545	Spring, Brake Shoe Retaining	4
19	777-0546	Spring, Brake Shoe Release	2

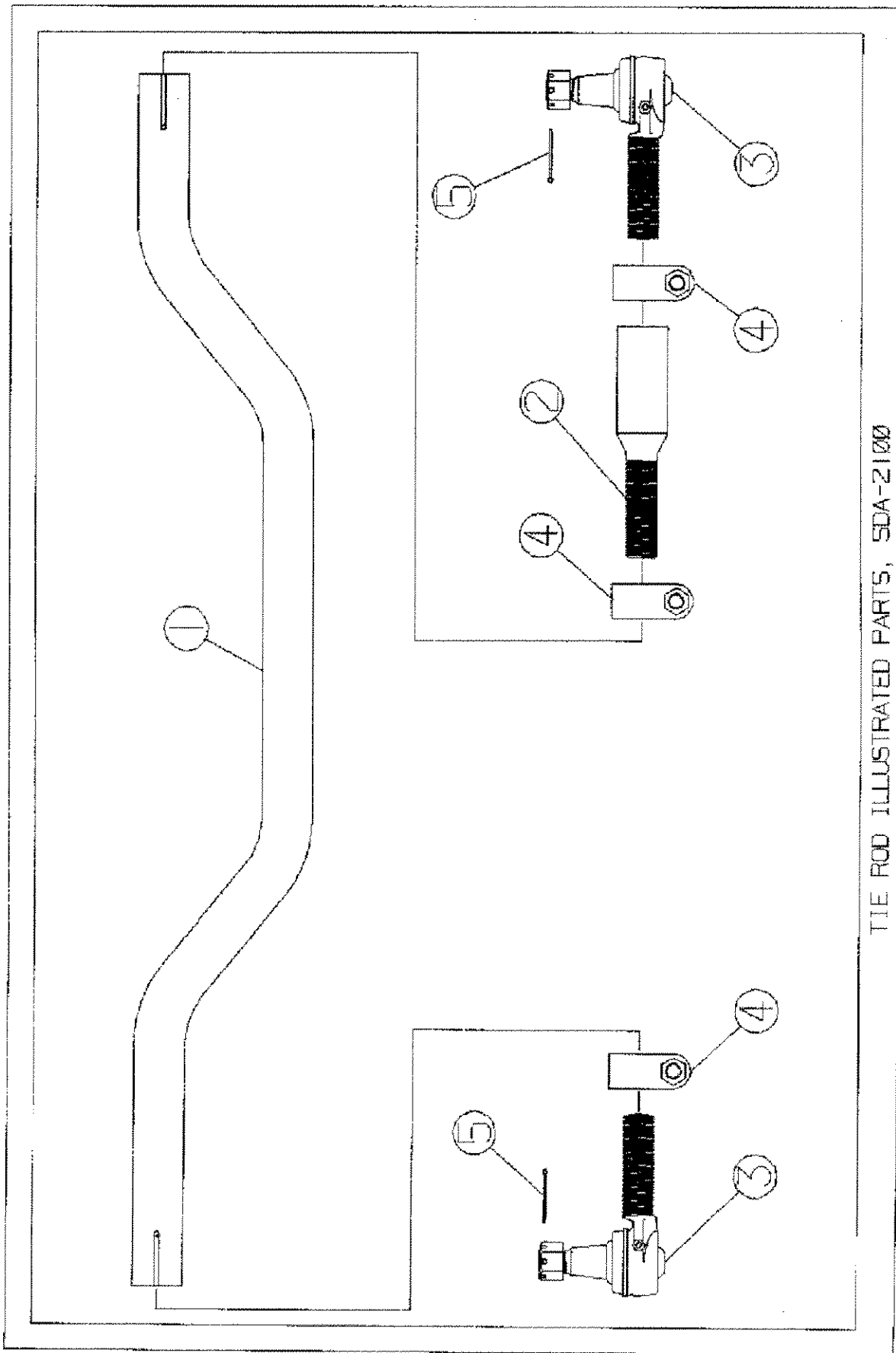
\* Use quan tity as re quired to ob tain .005 -- .035 end float of the cam shaft.



UNIVERSAL JOINT ILLUSTRATED PARTS, SDA-2100

## UNIVERSAL JOINT PARTS LIST, SDA-2100

<u>ITEM</u>	<u>PART NUMBER</u>	<u>DESCRIPTION</u>	<u>QTY/AXLE</u>
1	964-1238	Yoke Shaft Assembly, Outer	2
2	965-2938	Drive Yoke Assembly, Inner	2
3	277-0274	Cross & Bearing Assembly	2
4	769-0392-XXX	Inner Axle Shaft, LH	1
	769-0392-XXY	Inner Axle Shaft, RH	1
5	756-0337	Wear Ring, Outer Drive Yoke (Part of Item #1 Above)	2
6	756-0335	Wear Ring, Inner Drive Yoke (Part of Item #2 Above)	2
7	927-1776	Washer, Drive Yoke Retaining	2
8	265-0989	Bolt, 5/8-18 x 1 1/2, Grade 8 HH	2
9	265-0678	Bolt, Cross & Bearing Assembly	16
10	675-0016	O-Ring, Inner Drive Yoke	2



TIE ROD ILLUSTRATED PARTS, SDA-2100

## TIE ROD PARTS LIST, SDA-2100

<u>ITEM</u>	<u>PART NUMBER</u>	<u>DESCRIPTION</u>	<u>QTY/AXLE</u>
1	884-0242 XXX	Tie Rod	1
2	884-0248	Tie Rod Adjuster	1
3	363-0272	Tie Rod End Assembly, LH	1
	363-0273	Tie Rod End Assembly, RH	1
4	255-0449	Clamp Assembly, TieRod	3
5	749-0225	Cotter Pin, Tie Rod End	2