

**Brought to you by Pro Gear &
Transmission.**

For parts or service call:

**877-776-4600
407-872-1901**



www.globaldifferentialsupply.com

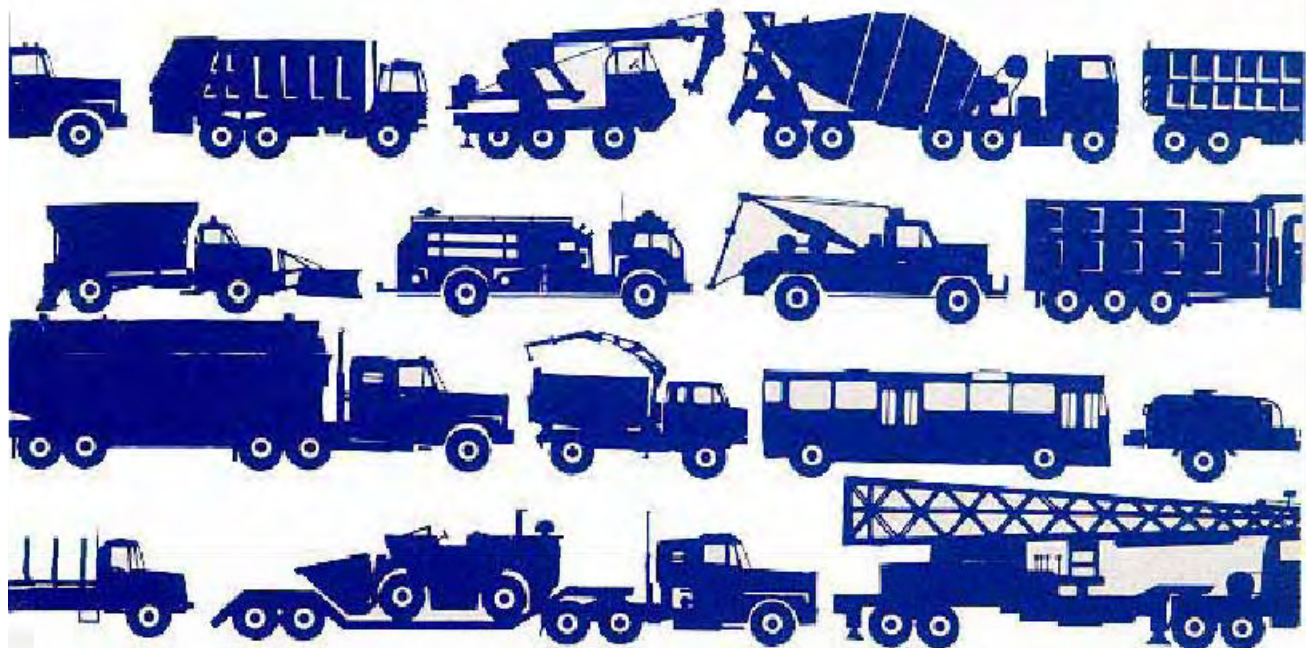
**906 W. Gore St. Orlando, FL 32805
parts@eprogear.com**

STEERABLE DRIVE AXLE PARTS MANUAL

MODEL
SDA 12
SDA 16
SDA 18
SDA 21



Telephone (925) 454-9500 Fax (925) 454-9501
151 Lawrence Drive, Livermore, CA 94551
www.fabcoautomotive.com



PARTS MANUAL SDA 12

Steerable Drive Axle Assembly.....	26-27
Steerable Drive End Assembly.....	28-31

To Use This Book:

1. Refer to the exploded view which illustrates the needed part.
2. Find the required part in the exploded view and then note the item number or numbers.
3. Locate the item number in the parts list for part number, description, and quantity.

Note:

1. Before ordering parts for a Fabco Steerable Drive Axle, please refer to the Fabco nameplate located on the left rear of the axle housing. Specify model number, serial number, ratio or other information that is on the nameplate when ordering parts.
2. Some parts such as the steerable drive ends, the axle housing and the steering arm are unique to customer specifications. Our parts personnel can refer to the specific Bill of Material to determine part numbers for these parts.

Additional Parts Manuals:

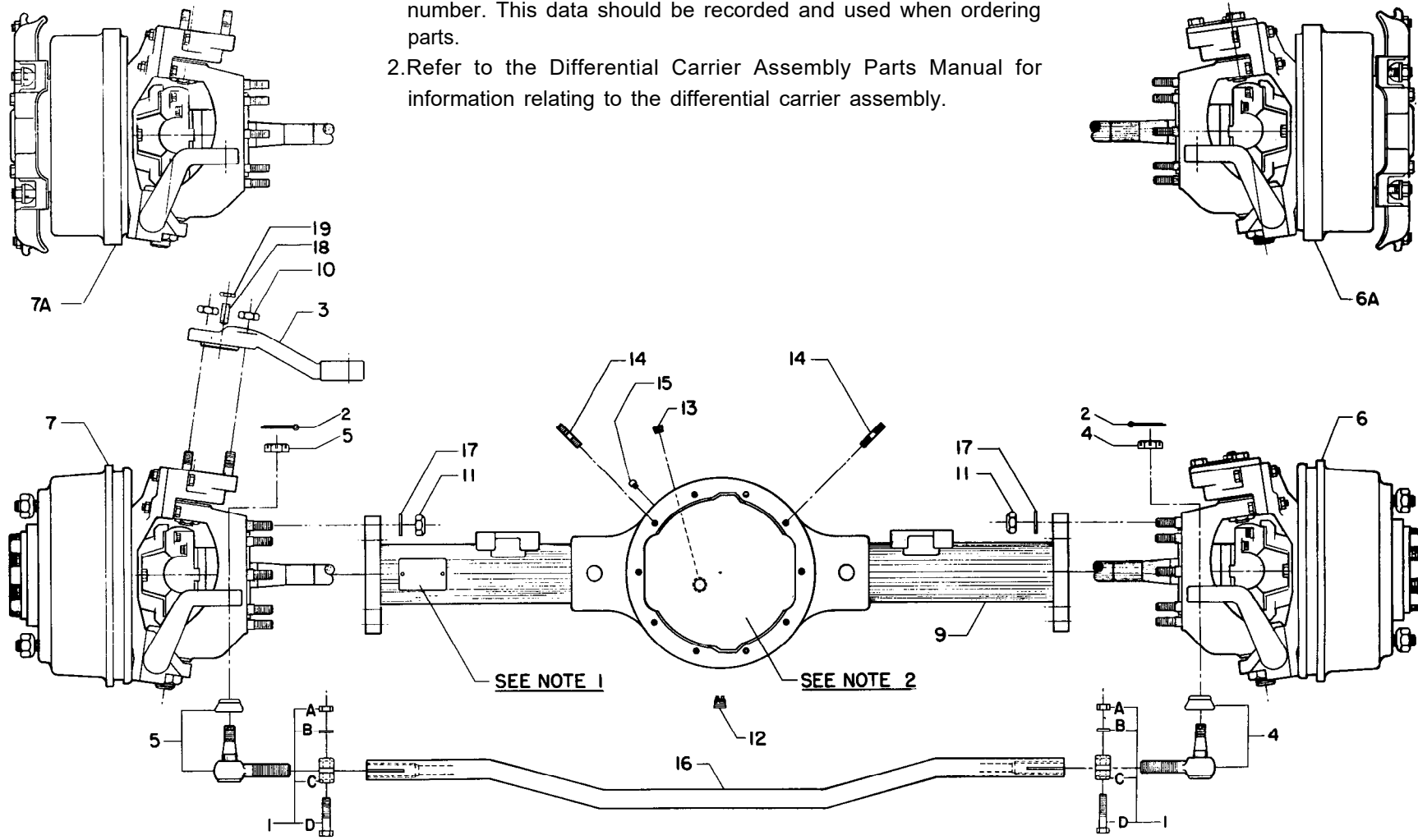
Single Reduction Differential Parts Manual
Air Brake Parts Manual
Hydraulic Brake Parts Manual

Part numbers contained in this manual were in effect at the time the manual was approved for printing and are subject to change without notice or liability. Fabco Automotive Corporation reserves the right to change parts at any time.

Steerable Drive Axle Assembly

NOTES:

1. Axle name plate lists model number, serial number and part number. This data should be recorded and used when ordering parts.
2. Refer to the Differential Carrier Assembly Parts Manual for information relating to the differential carrier assembly.

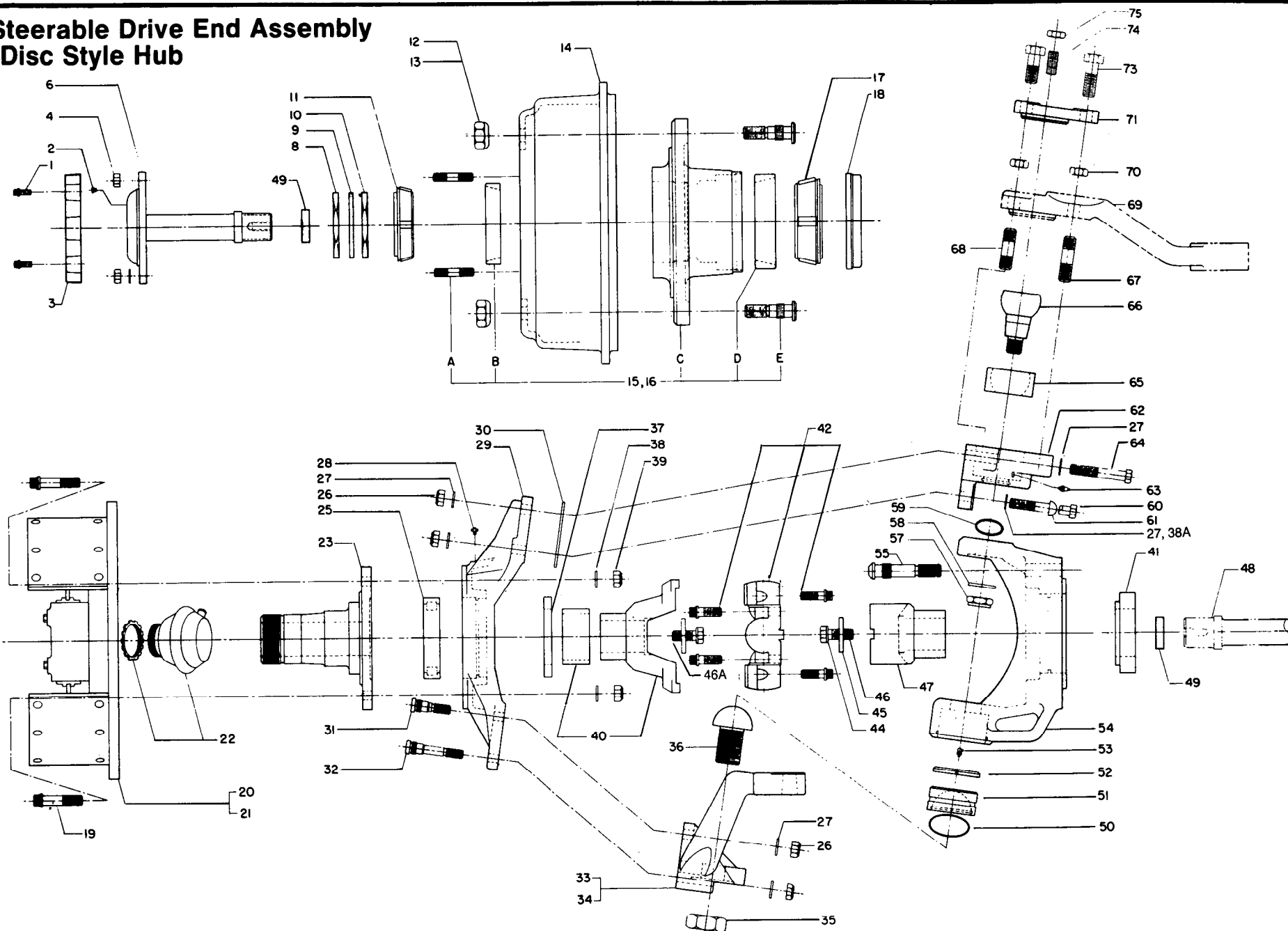


Steerable Drive Axle Assembly

	ITEM	PART NO.	DESCRIPTION	QUANTITY PER AXLE
	1	255 223	Clamp, Tie Rod, Consisting of:	2
	A	688 265	Locknut, 5/8-18	
	B	927 276	Lockwasher, 5/8	
	C	255 446	Clamp	
	D	265 255	Bolt, 5/8-18 x 2¾	
	2	749 225	Pin, Cotter	2
	3	—	*Arm, Axle Steering	1
	4	363 227	End, Right Tie Rod	1
	5	363 228	End, Left Tie Rod	1
	6	—	*End, Right Steerable Drive, Disc Style	} 1
	6A	—	*End, Right Steerable Drive, Cast Spoke Style	
	7	—	*End, Left Steerable Drive, Disc Style	} 1
	7A	—	*End, Left Steerable Drive, Cast Spoke Style	
	9	—	*Housing, Axle	1
	10	688 275	Nut, Steering Arm Mounting Lock	4
	11	688 689	Nut, Steerable Drive End to Axle Housing Mounting Stud	16
	12	758 274	Plug, Axle Housing Drain	1
	13	758 229	Plug, Axle Housing Oil Level	1
	14	788 548 003	Stud, Differential Carrier Mounting	2
	15	836 222	Fitting, Axle Housing Vent	1
	16	—	*Tube, Tie Rod	1
	17	927 668	Washer, Steerable Drive End Mounting Stud	16
	18	724 723	Screw, Socket Hd. Set, 5/8-18	2
	19	688 636	Nut, Jam, 5/8-18	2
NOT SHOWN	20	265 249	Bolt, Differential Mtg.	8
	21	688 287	Nut, Hex 7/16-20	2
	22	927 749	Lockwasher, 7/16	2
	23	927 684	Washer, Flat, 7/16	8
	24	358 222	Fitting, Grease	2
		728 232 001	Loctite 515 Gasket Eliminator	6 ml Tube

*See note 2, Table of Contents

Steerable Drive End Assembly Disc Style Hub



**Steerable Drive End Assembly
(Disc Style Hub)**

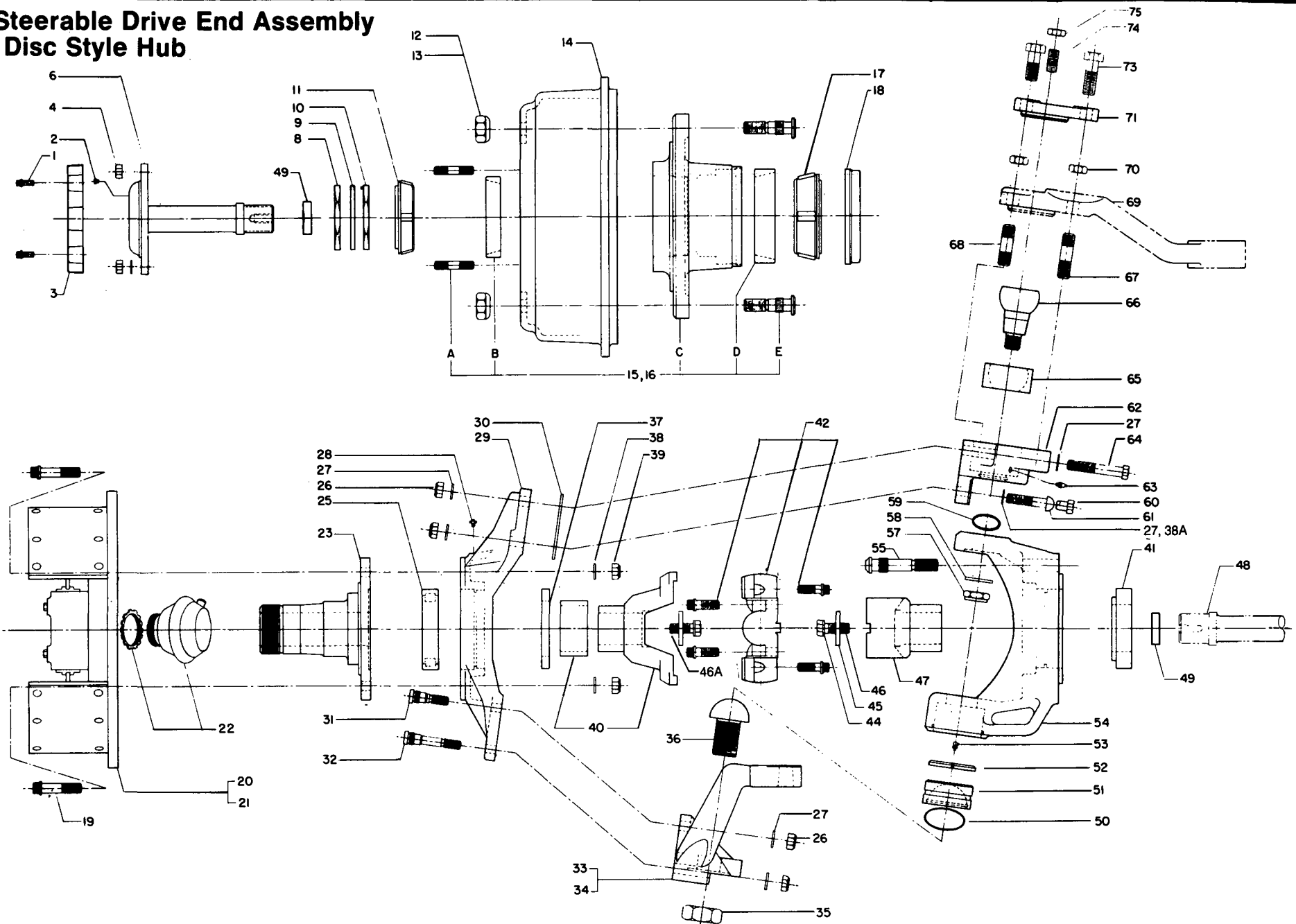
ITEM	PART NO.	DESCRIPTION	QUANTITY PER AXLE END	
			L.H.	R.H.
1	724 666	Capscrew, Hub Cap	2	2
2	758 232	Plug, Wheel Brg. Oil Level	1	1
3	483 259	Hub Cap	1	1
4	688 342	Nut, Axle Shaft Drive Stud	8	8
6	742 889	Shaft, Outer Axle	1	1
8	688 242	Nut, Wheel Bearing Lock	1	1
9	927 278	Washer, Wheel Brg. Lock	1	1
10	688 239	Nut, Wheel Bearing Adjustment (With Dowel)	1	1
11	233 242	Bearing Cone, Outer Wheel	1	1
12	688 257	Nut, Left Hand Wheel	1	0
13	688 258	Nut, Right Hand Wheel	—	10
14	378 262	Drum, 15x5 Brake	1	1
15	482 058 003+Assembly, Left Hand Wheel Hub (Air Brake Axles Only)	}	1	—
	482 058 007+Assembly, Left Hand Wheel Hub (Hyd. Brake Axles Only)			
16	482 058 004+Assembly, Right Hand Wheel Hub (Air Brake Axles Only)	}	—	1
	482 058 008+Assembly, Right Hand Wheel Hub (Hyd. Brake Axles Only)			
A	788 549 001	Stud, Outer Axle Shaft Drive	8	8
B	233 239	Bearing Cup, Outer Wheel	1	1
C	482 297	Hub, Wheel (Air Brake Axles Only)	1	1
	482 347	Hub, Wheel (Hyd. Brake Axles Only)		
D	233 397	Bearing Cup, Inner Wheel	1	1
E	788 538 005	Stud, Left Hand Wheel	1	0
	788 538 006	Stud, Right Hand Wheel		

ITEM	PART NO.	DESCRIPTION	QUANTITY PER AXLE END	
			L.H.	R.H.
17	233 396	Bearing Cone, Inner Wheel	1	1
18	732 334	Seal, Wheel Hub	1	1
19	724 682	Screw, Wheel Spindle Mtg., 3½ Lg.	8	8
	724 683	Screw, Wheel Spindle Mtg., 4-3/8 Lg.	2	2
20	****	Brake Assembly, Left Hand	1	—
21	****	Brake Assembly, Right Hand	—	1
22	243 264	**** Actuator & Lock Nut, Brake (Air Brake Axles Only)	1	1
23	774 272	Spindle, Wheel Bearing	1	1
25	233 264	Bearing, Outer Race and Roller Assy.	1	1
26	688 292	Nut, Lower & Upper Kingpin Bracket Mounting Lock	8	8
27	927 666	Washer, Kingpin Bracket Mtg.	12	12
28	836 235	Vent	1	1
29	965 935	Yoke, Spindle	1	1
30	792 977	Shim, Camber Adjustment	1	1
31	788 539 006	Stud, Lower Kingpin Bracket Mtg. (2" Long)	2	2
32	788 539 004	Stud, Lower Kingpin Bracket Mtg. (3-3/8" Long)	2	2
33	273 369 001	Bracket, Left Lower Kingpin	1	—
34	273 372 001	Bracket, Right Lower Kingpin	—	1
35	688 578	Nut, Lower Kingpin Ball Stud Jam	1	1
36	225 277	Ball Stud, Lower Kingpin	1	1
37	732 333	Seal, Outer Drive Yoke	1	1
38	927 784	Washer, Spindle Mtg. Lock	10	10

**** Refer to the Air or Hydraulic Brake Parts Manual for information relating to the brakes and see Note 2, Table of Contents.

+This Assembly contains Items A through E.

Steerable Drive End Assembly Disc Style Hub



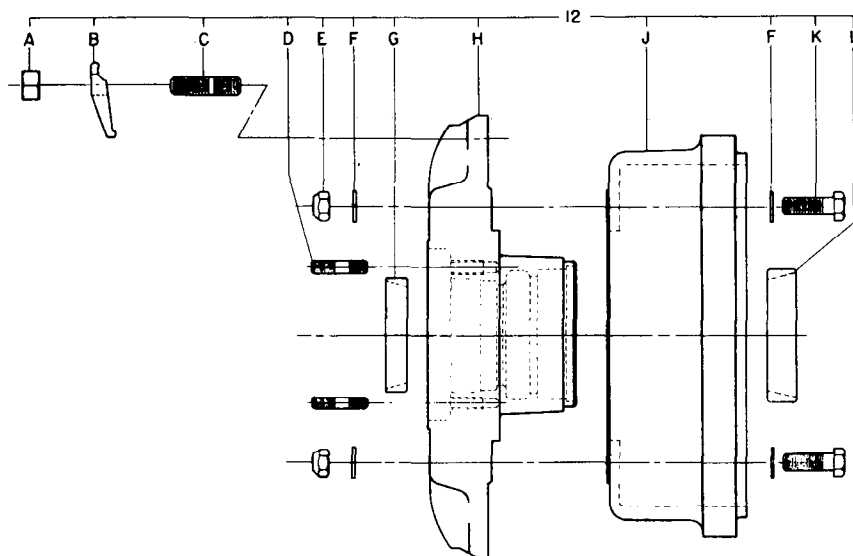
**Steerable Drive End Assembly
(Disc Style Hub)**

ITEM	PART NO.	DESCRIPTION	QUANTITY PER AXLE END	
			L.H.	R.H.
38A	927 767	Washer, Steering Stop Adjustment	A/R	A/R
39	688 345	Nut, Wheel Spindle Mounting Lock	10	10
40	9651766	Yoke, Outer Drive and Bearing Race	1	1
41	732 305	Seal, Assembly, Inner Drive Yoke	1	1
42	277 248	Cross and Bearing, Universal Joint w/Bolts	1	1
44	927 289	Washer, Drive Yoke Bolt Sealing	2	2
45	927 723	Washer, Drive Yoke Retaining	2	2
46	265 276	Bolt, Inner Drive Yoke Retaining, 1¾" Long	1	1
46A	265 234	Bolt, Outer Drive Yoke Retaining, 2" Long	1	1
47	965 765	Yoke, Inner Drive	1	1
48	—	Shaft, Inner Axle (See Note 2, Table of Contents)	1	1
49	736 768	Ring, Inner Axle and Outer Axle	2	2
50	675 229	O-Ring, Lower Kingpin	1	1
51	234 242	Bearing, Lower Kingpin	1	1
52	793 266	Plate, Lower Kingpin Bearing	1	1
53	358 223	Fitting, 45° Grease	1	1
54	965 824	Yoke, Suspension	1	1
55	788 538 008	Stud, Suspension Yoke to Axle Housing	8	8

ITEM	PART NO.	DESCRIPTION	QUANTITY PER AXLE END	
			L.H.	R.H.
57	688 274	Nut, Upper Kingpin Ball Stud Lock	1	1
58	927 649	Washer, Upper Kingpin Ball Stud	1	1
59	675 222	O-ring, Upper Kingpin	1	1
60	265 668	Bolt, Upper Kingpin Bracket Mounting	1	1
61	265 899	Bolt, Steering Stop	1	1
62	273 375	Bracket, Upper Kingpin	1	1
63	358 222	Fitting, Grease	1	1
64	265 658	Bolt, Upper Kingpin Bracket Mounting	2	2
65	234 239	Bearing, Upper Kingpin	1	1
66	225 278	Ball Stud, Upper Kingpin	1	1
67	788 554 003	Stud, Steering Arm (2-9/16" Long)	* 2	—
68	788 554 002	Stud, Steering Arm (2-1 /16" Long)	* 2	—
69	—	Arm, Steering (see note 2, Table of Contents)	* 1	—
70	688 275	Nut, Steering Arm Mounting Lock	* 4	—
71	235 588	Cap, Upper Kingpin	* —	1
73	265 998	Bolt, Upper Kingpin Cap	* —	4
74	724 723	Screw, Soc. Hd. Set 5/8-18	1	1
75	688 636	Nut, Jam, 5/8-18	1	1

*Steering arm, studs and nuts and/or cap and bolts may be mounted on either steerable end in any combination, two arms, two caps or one each.

Cast Spoke Style Hub Assembly



Cast Spoke Style Hub Assembly

ITEM	PART NO.	DESCRIPTION	QUANTITY PER AXLE END		L.H.	R.H.					
12	482 059 001	Assembly, Cast Spoke Hub (Air, Clamps for 8" and Narrower Rim)	1	1			12C	788 474	Stud, Rim	6	6
	482 059 002	Assembly, Cast Spoke Hub (Hydraulic, Clamps for 8" and Narrower Rim)					12D	788 475	Stud, Outer Axle Shaft Drive	8	8
	482 059 005	Assembly, Cast Spoke Hub (Air, Clamps for 8½" and Wider Rim)					12E	688 628	Nut, Drum Mounting	6	6
	482 059 006	Assembly, Cast Spoke Hub (Hydraulic, Clamps for 8½" and Wider Rim)					12F	927 555	Washer, Drum Mounting	6	6
							12G	233 239	Bearing Cup, Outer Wheel	1	1
							12H	482 337	Wheel, Cast Spoke (Air Brake Axles Only)	1	1
								482 346	Wheel, Cast Spoke (Hydraulic Brake Axles Only)		
12A	688 549	Nut, Rim Clamp					12J	378 274	Drum, 15x5 Brake	1	1
12B	255 428	Clamp, Rim, 8" and Narrower Rim	6	6			12K	265 444	Bolt, Drum Mounting	6	6
	255 448	Clamp, Rim, 8½" and Wider Rim					12L	233 397	Bearing Cup, Inner Wheel	1	1

This assembly contains items A through L.

PARTS MANUAL SDA 16

Steerable Drive Axle Assembly.....	34-35
Steerable Drive End Assembly.....	36-39

To Use This Book:

1. Refer to the exploded view which illustrates the needed part.
2. Find the required part in the exploded view and then note the item number or numbers.
3. Locate the item number in the parts list for part number, description, and quantity.

Note:

1. Before ordering parts for a Fabco Steerable Drive Axle, please refer to the Fabco nameplate located on the left rear of the axle housing. Specify model number, serial number, ratio or other information that is on the nameplate when ordering parts.
2. Some parts such as the steerable drive ends, the axle housing and the steering arm are unique to customer specifications. Our parts personnel can refer to the specific Bill of Material to determine part numbers for these parts.

Additional Parts Manuals:

Single Reduction Differential Parts Manual
Double Reduction Differential Parts Manual
Air Brake Parts Manual

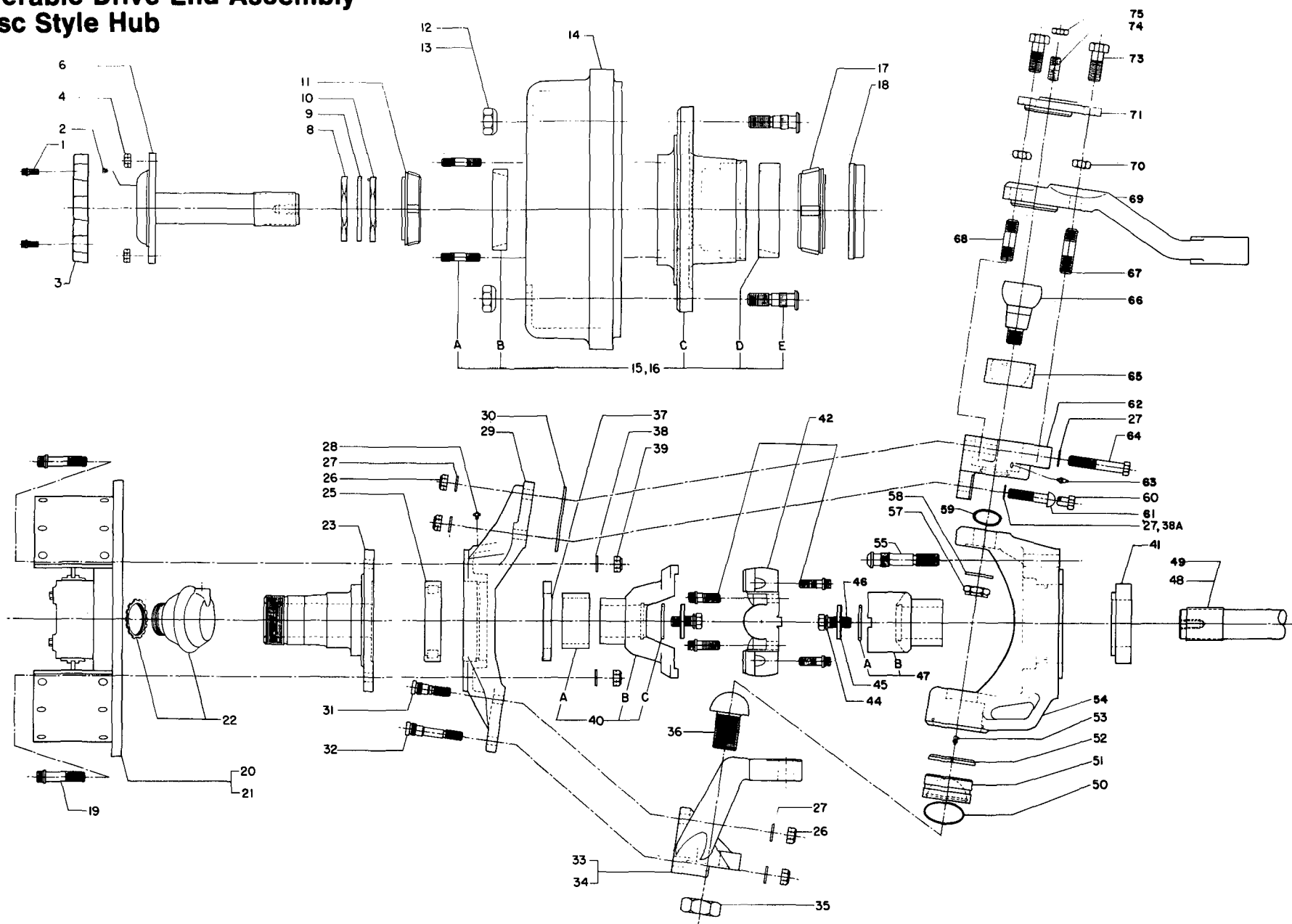
Part numbers contained in this manual were in effect at the time the manual was approved for printing and are subject to change without notice or liability. Fabco reserves the right to change parts at any time.

Steerable Drive Axle Assembly

	ITEM	PART NO.	DESCRIPTION	QUANTITY PER AXLE
	1	255 223	Clamp, Tie Rod, Consisting of:	2
	A	688 265	Locknut, 5/8-18	
	B	927 276	Lockwasher, 5/8	
	C	255 446	Clamp	
	D	265 255	Bolt, 5/8-18 x 2¾	
	2	749 225	Pin, Cotter	2
	3	—	*Arm, Axle Steering	1
	4	363 227	End, Right Tie Rod	1
	5	363 228	End, Left Tie Rod	1
	6	—	*End, Right Steerable Drive, Disc Style	} 1
	6A	—	*End, Right Steerable Drive, Cast Spoke Style	
	7	—	*End, Left Steerable Drive, Disc Style	} 1
	7A	—	*End, Left Steerable Drive, Cast Spoke Style	
	9	—	*Housing, Axle	1
	10	688 275	Nut, Steering Arm Mounting Lock	4
	11	688 689	Nut, Steerable Drive End to Axle Housing Mounting Stud	16
	12	758 274	Plug, Axle Housing Drain	1
	13	758 362	Plug, Axle Housing Oil Level	1
	14	788 549 001	Stud, Differential Carrier Mounting	2
	15	836 222	Fitting, Axle Housing Vent	1
	16	—	*Tube, Tie Rod	1
	17	927 668	Washer, Steerable Drive End Mounting Stud	16
	18	724 723	Set Screw, 5/8-18x1½	2
	19	688 636	Nut, Jam, 5/8-18	2
NOT SHOWN {	20	265 229	Bolt, Differential Mtg.	10
	21	688 266	Nut, Hex 1/2-20	2
	22	927 282	Lockwasher, 1/2	2
	23	927 553	Washer, Flat, 1/2	10
	24	358 222	Fitting, Grease	2
	25	758 293	Plug, Housing Differential Temp.	1
		728 232 001	Loctite 515 Gasket Eliminator	6 ml Tube

*See note 2, Table of Contents

-36-



**Steerable Drive End Assembly
(Disc Style Hub)**

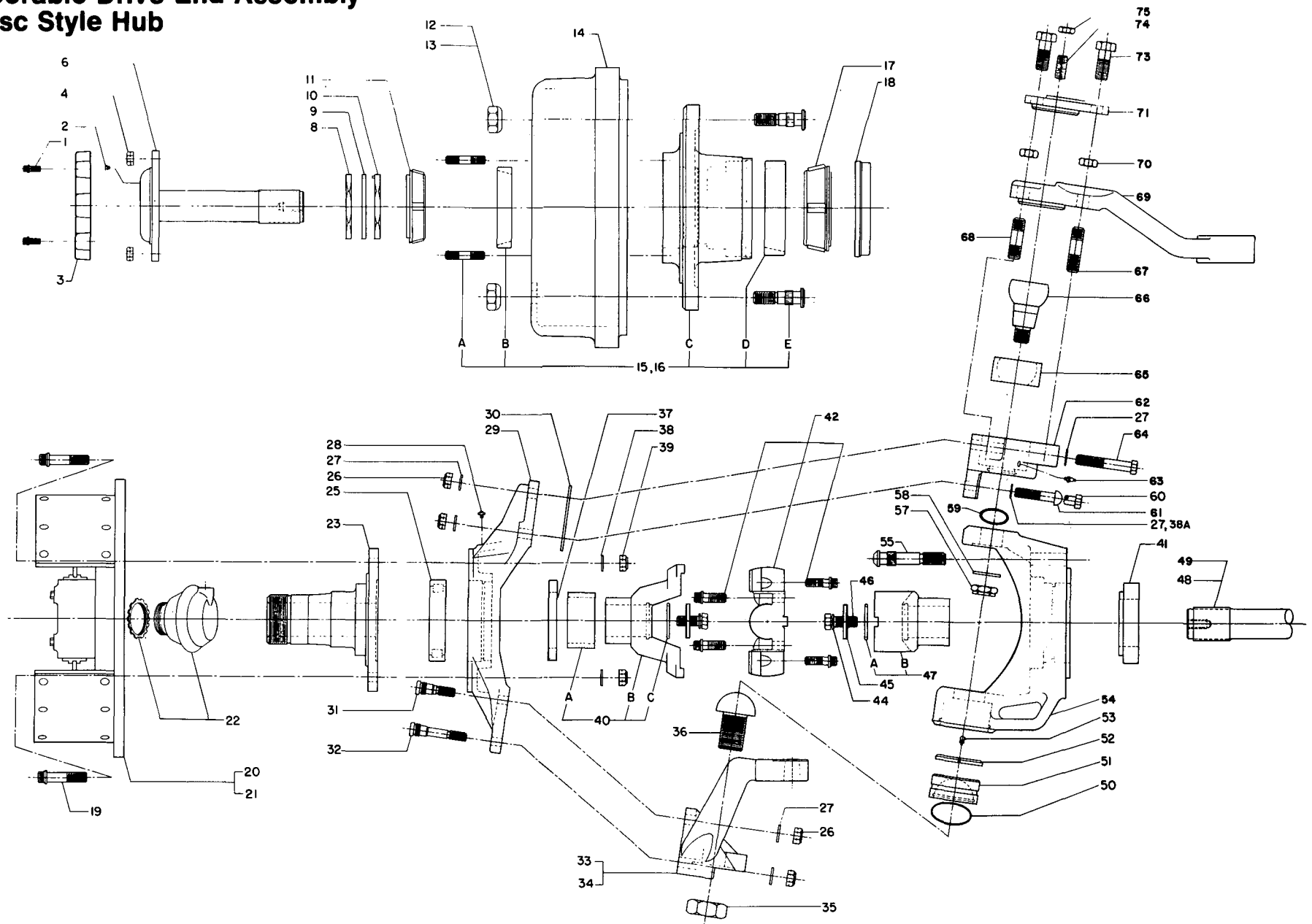
ITEM	PART NO.	DESCRIPTION	QUANTITY PER AXLE END	
			L.H.	R.H.
1	724 666	Capscrew, Hub Cap	2	2
2	758 232	Plug, Wheel Brg. Oil Level	1	1
3	483 259	Hub Cap	1	1
4	688 342	Nut, Axle Shaft Drive Stud	8	8
6	742 962	Shaft, Outer Axle	1	1
8	688 242	Nut, Wheel Bearing Lock	1	1
9	927 278	Washer, Wheel Brg. Lock	1	1
10	688 239	Nut, Wheel Bearing Adjustment (With Dowel)	1	1
11	233 242	Bearing Cone, Outer Wheel	1	1
12	688 257	Nut, Left Hand Wheel	10	—
13	688 258	Nut, Right Hand Wheel	—	10
14	378 262	Drum, 15x5 Brake	1	1
15	482 057 003	+Assembly, Left Hand Wheel Hub, Long Studs	1	—
	482 057 001	+Assembly, Left Hand Wheel Hub, Short Studs		
16	482 057 004	+Assembly, Right Hand Wheel Hub, Long Studs	—	1
	482 057 002	+Assembly, Right Hand Wheel Hub, Short Studs		
A	788 549 001	Stud, Outer Axle Shaft Drive	8	8
B	233 239	Bearing Cup, Outer Wheel	1	1
C	482 364	Hub, Wheel	1	1
D	233 397	Bearing Cup, inner Wheel	1	1
E	788 538 005	Stud, Left Hand Wheel, Long	10	—
	788 538 001	Stud, Left Hand Wheel, Short		
	788 538 006	Stud, Right Hand Wheel, Long	—	10
	788 538 002	Stud, Right Hand Wheel, Short		

+This Assembly contains Items A through E.

ITEM	PART NO.	DESCRIPTION	QUANTITY PER AXLE END	
			L.H.	R.H.
17	233 396	Bearing Cone, Inner Wheel	1	1
18	732 334	Seal, Wheel Hub	1	1
19	724 682	Screw, Wheel Spindle Mtg., 3½ Lg.	8	8
	724 683	Screw, Wheel Spindle Mtg., 4-3/8 Lg.	2	2
20		**** Brake Assembly, Left Hand	1	—
21		**** Brake Assembly, Right Hand	—	1
22	243 264	**** Actuator & Lock Nut, Brake	1	1
23	774 272	Spindle, Wheel Bearing	1	1
25	233 264	Bearing, Outer Race and Roller Assy.	1	1
26	688 292	Nut, Lower & Upper Kingpin Bracket Mounting Lock	8	8
27	927 666	Washer, Kingpin Bracket Mtg.	12	12
28	836 235	Vent	1	1
29	965 935	Yoke, Spindle	1	1
30	792 977	Shim, Camber Adjustment	1	1
31	788 539 006	Stud, Lower Kingpin Bracket Mtg. (2" Long)	2	2
32	788 539 004	Stud, Lower Kingpin Bracket Mtg. (3-3/8" Long)	2	2
33	273 369 001	Bracket, Left Lower Kingpin	1	—
34	273 372 001	Bracket, Right Lower Kingpin	—	1
35	688 578	Nut, Lower Kingpin Ball Stud Jam	1	1
36	225 277	Ball Stud, Lower Kingpin	1	1
37	732 333	Seal, Outer Drive Yoke	1	1
38	927 784	Washer, Spindle Mtg. Lock	10	10

**** Refer to the Air Brake Parts Manual for information relating to the brakes and see Note 2, Table of Contents.

Steerable Drive End Assembly Disc Style Hub



**Steerable Drive End Assembly
(Disc Style Hub)**

**QUANTITY
PER
AXLE END**

ITEM	PART NO.	DESCRIPTION	L.H.	R.H.
38A	927 767	Washer, Steering Stop	A/R	A/R
39	688 345	Nut, Wheel Spindle Mounting Lock	10	10
40	9651763	Yoke, Outer Drive (w/Split Ring and Bearing Race)	1	1
40A	736 774	Bearing Race	1	1
40B	965 763	Yoke, Outer Drive	1	1
40C	736 878	Ring, Split	1	1
41	732 305	Seal, Assembly, Inner Drive Yoke	1	1
42	277 248	Cross and Bearing, Universal Joint w/Bolts	1	1
44	675 016	O-Ring, Drive Yoke Bolt Sealing	2	2
45	9271776	Washer, Drive Yoke Retaining Washer	2	2
46	265 989	Bolt, Drive Yoke Retaining	2	2
47	9651837	Yoke, Inner Drive (w/Split Ring)	1	1
47A	736 878	Ring, Split	1	1
47B	965 837	Yoke, Inner Drive	** 1	1
48	—	Shaft, Inner Axle	** —	1
49	—	Shaft, Inner Axle	** 1	—
50	675 229	O-Ring, Lower Kingpin	1	1
51	234 242	Bearing, Lower Kingpin	1	1
52	793 266	Plate, Lower Kingpin Bearing	1	1
53	358 223	Fitting, 45° Grease	1	1

**QUANTITY
PER
AXLE END**

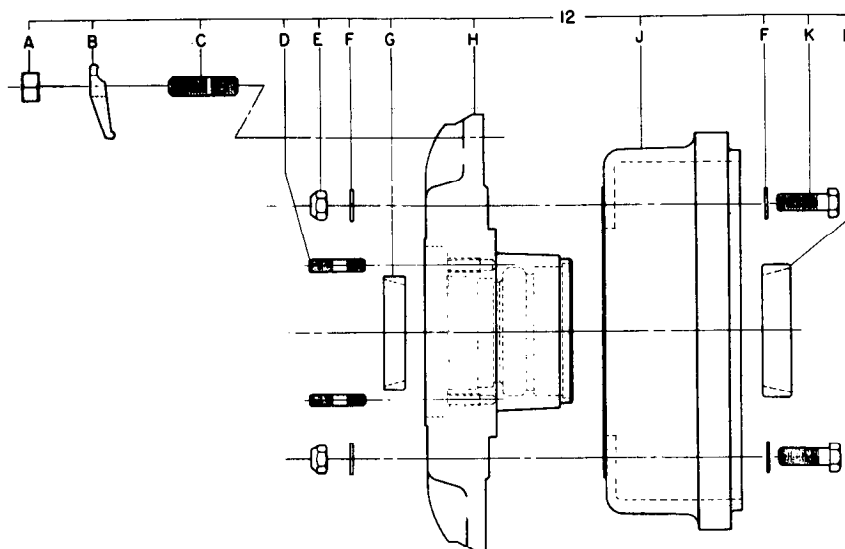
ITEM	PART NO.	DESCRIPTION	L.H.	R.H.
54	965 759	Yoke, Suspension	1	1
55	788 538 012	Stud, Suspension Yoke to Axle Housing	8	8
57	688 274	Nut, Upper Kingpin Ball Stud Lock	1	1
58	927 649	Washer, Upper Kingpin Ball Stud	1	1
59	675 222	O-ring, Upper Kingpin	1	1
60	265 668	Bolt, Upper Kingpin Bracket Mounting	1	1
61	265 899	Bolt, Steering Stop	1	1
62	273 375	Bracket, Upper Kingpin	1	1
63	358 222	Fitting, Grease	1	1
64	265 658	Bolt, Upper Kingpin Bracket Mounting	2	2
65	234 239	Bearing, Upper Kingpin	1	1
66	225 278	Ball Stud, Upper Kingpin	1	1
67	788 554 003	Stud, Steering Arm (2-9/16" Long)	* 2	—
68	788 554 002	Stud, Steering Arm (2-1/16" Long)	* 2	—
69	—	Arm, Steering (see Note 2, Table of Contents)	* 1	—
70	688 275	Nut, Steering Arm Mounting Lock	* 4	—
71	235 588	Cap, Upper Kingpin	* —	1
73	265 998	Bolt, Upper Kingpin Cap	* —	4
74	724 723	Screw, Socket HD Set, 5/8-18	1	1
75	688 636	Nut, Jam, 5/8-18	1	1

*Steering arm, studs, and nuts and/or cap and bolts may be mounted on either steerable end in any combination, two arms, two caps or one each.

** See note 2. Table of Contents.

(Axle shafts may differ from left to right according to position of differential.)

Cast Spoke Style Hub Assembly



Cast Spoke Style Hub Assembly

ITEM	PART NO.	DESCRIPTION	QUANTITY PER AXLE END	
			L.H.	R.H.
12	482 059 001	Assembly, Cast Spoke Hub (Air, Clamps for 8" and Narrower Rim)	1	1
	482 059 005	Assembly, Cast Spoke Hub (Air, Clamps for 8½" and Wider Rim)		
12A	688 549	Nut, Rim Clamp	6	6
12B	255 428	Clamp, Rim, 8" and Narrower Rim	6	6
	255 448	Clamp, Rim, 8½" and Wider Rim		
12C	788 474	Stud, Rim	6	6
12D	788 475	Stud, Outer Axle Shaft Drive	8	8
12E	688 628	Nut, Drum Mounting	6	6
12F	927 555	Washer, Drum Mounting	6	6
12G	233 239	Bearing Cup, Outer Wheel	1	1
12H	482 337	Wheel, Cast Spoke	1	1
12J	378 274	Drum, 15x15 Brake	1	1
12K	265 444	Bolt, Drum Mounting	6	6
12L	233 397	Bearing Cup, Inner Wheel	1	1

This assembly contains Items A through L.

PARTS MANUAL SDA 18

Steerable Drive Axle Assembly.....	42-43
Steerable Drive End Assembly.....	44-47

To Use This Book:

1. Refer to the exploded view which illustrates the needed part.
2. Find the required part in the exploded view and then note the item number or numbers.
3. Locate the item number in the parts list for part number, description and quantity.

Notes:

1. Before ordering parts for a Fabco Steerable Drive Axle, please refer to the Fabco nameplate located on the left rear of the axle housing. Specify model number, serial number, part number, ratio or other information that is on the nameplate when ordering parts.
2. Some parts such as the steerable drive ends, the axle housing and the steering arm are unique to customer specifications. Our parts personnel can refer to the specific Bill of Material to determine part numbers for these parts.

Additional Parts Manuals:

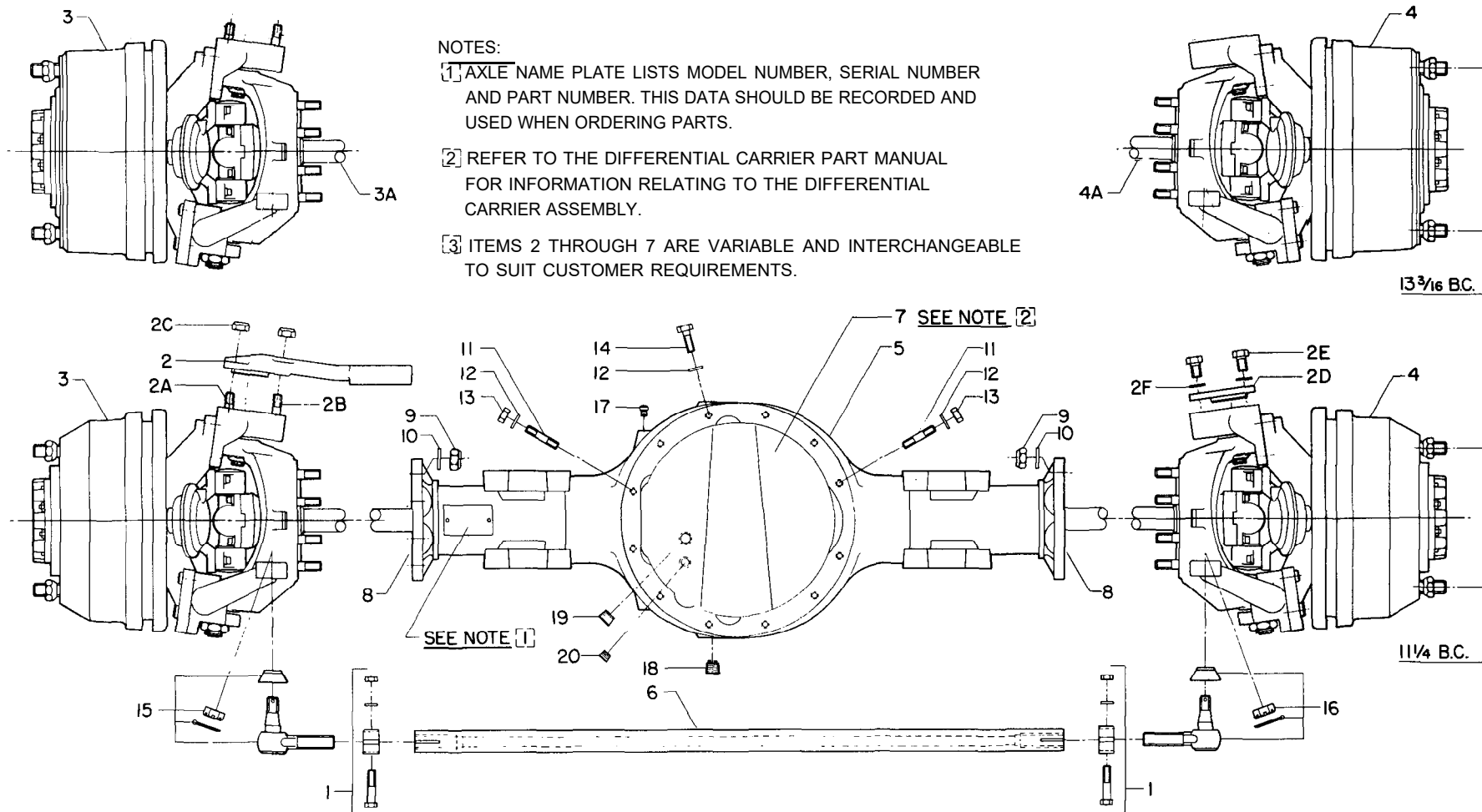
Single Reduction Differential Carrier Parts Manual
Double Reduction Differential Carrier Parts Manual
Drive Thru Differential Carrier Parts Manual
Air Brake Parts Manual

Part numbers contained in this manual were in effect at the time this manual was approved for printing and are subject to change without notice or liability. Fabco Automotive Corporation reserves the right to change parts at any time.

Steerable Drive Axle Assembly

NOTES:

- [1] AXLE NAME PLATE LISTS MODEL NUMBER, SERIAL NUMBER AND PART NUMBER. THIS DATA SHOULD BE RECORDED AND USED WHEN ORDERING PARTS.
- [2] REFER TO THE DIFFERENTIAL CARRIER PART MANUAL FOR INFORMATION RELATING TO THE DIFFERENTIAL CARRIER ASSEMBLY.
- [3] ITEMS 2 THROUGH 7 ARE VARIABLE AND INTERCHANGEABLE TO SUIT CUSTOMER REQUIREMENTS.

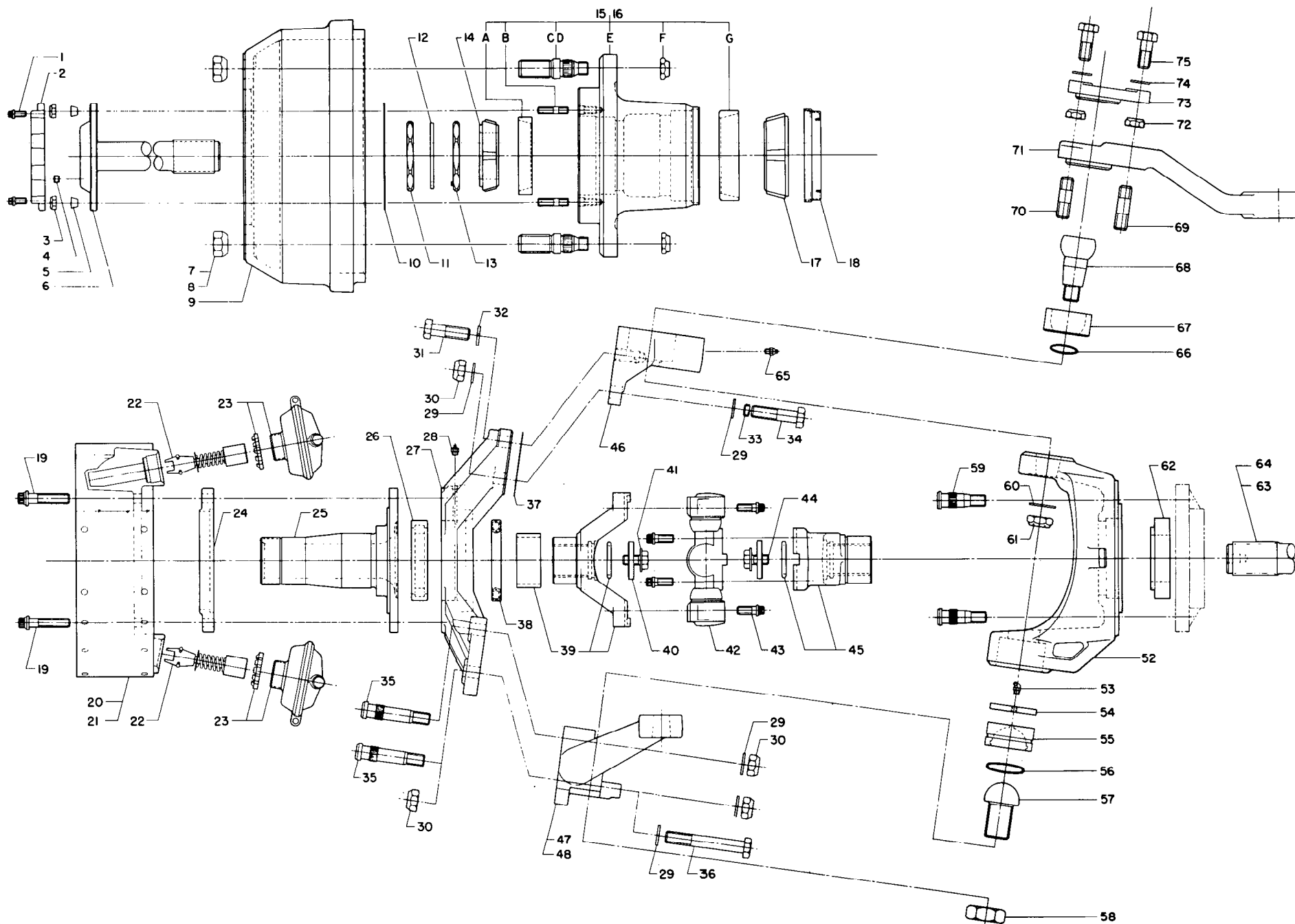


Steerable Drive Axle Assembly

ITEM	PART NO.	DESCRIPTION	QUANTITY PER AXLE
1	255 427	Clamp Assembly Tie Rod	2
2	—	*Arm, Steering	A/R
2A	788 473	*Stud, Steering Arm Mounting (Short)	A/R
2B	788 472	*Stud, Steering Arm Mounting (Long)	A/R
2C	688 687	*Nut, Steering Arm Mounting	A/R
2D	235 383	*Cap, Upper Kingpin	A/R
2E	265 269	*Bolt, Upper Kingpin Cap	A/R
2F	927 293	*Washer, Upper Kingpin Cap	A/R
3	—	*End, Left Steerable Drive (11¼ Bolt Circle)	1
	—	*End, Left Steerable Drive (13 ³ / ₁₆ Bolt Circle)	1
3A	—	*Shaft, Left Inner Axle	1
4	—	*End, Right Steerable Drive (11¼ Bolt Circle)	1
	—	*End, Right Steerable Drive (13 ³ / ₁₆ Bolt Circle)	1
4A	—	*Shaft, Right Inner Axle	1
5	—	*Housing, Axle	1
6	—	*Tube, Tie Rod	1
7	—	*Differential Carrier Assembly	1
8	427 452	Gasket, Form-In-Place Silicone Type Suspension Yoke and Differential to Axle Housing	3 oz.
9	688 689	Nut, Suspension Yoke to Axle Housing	16
10	927 668	Washer, Suspension Yoke to Axle Housing	16
11	788 462	Stud, Differential Carrier Mounting	2
12	927 276	Lockwasher, Differential Mounting	12
13	688 265	Nut, Differential Mounting Studs	2
14	265 223	Capscrew, Differential Mounting	10
15	363 272	End, Left Tie Rod	1
16	363 273	End, Right Tie Rod	1
17	836 222	Fitting, Axle Housing Vent	1
18	758 274	Plug, Axle Housing Drain	1
19	758 362	Plug, Dryseal, Axle Housing Oil Level	1
20	758 293	Plug, Dryseal	

*See note 2 Table of Contents.

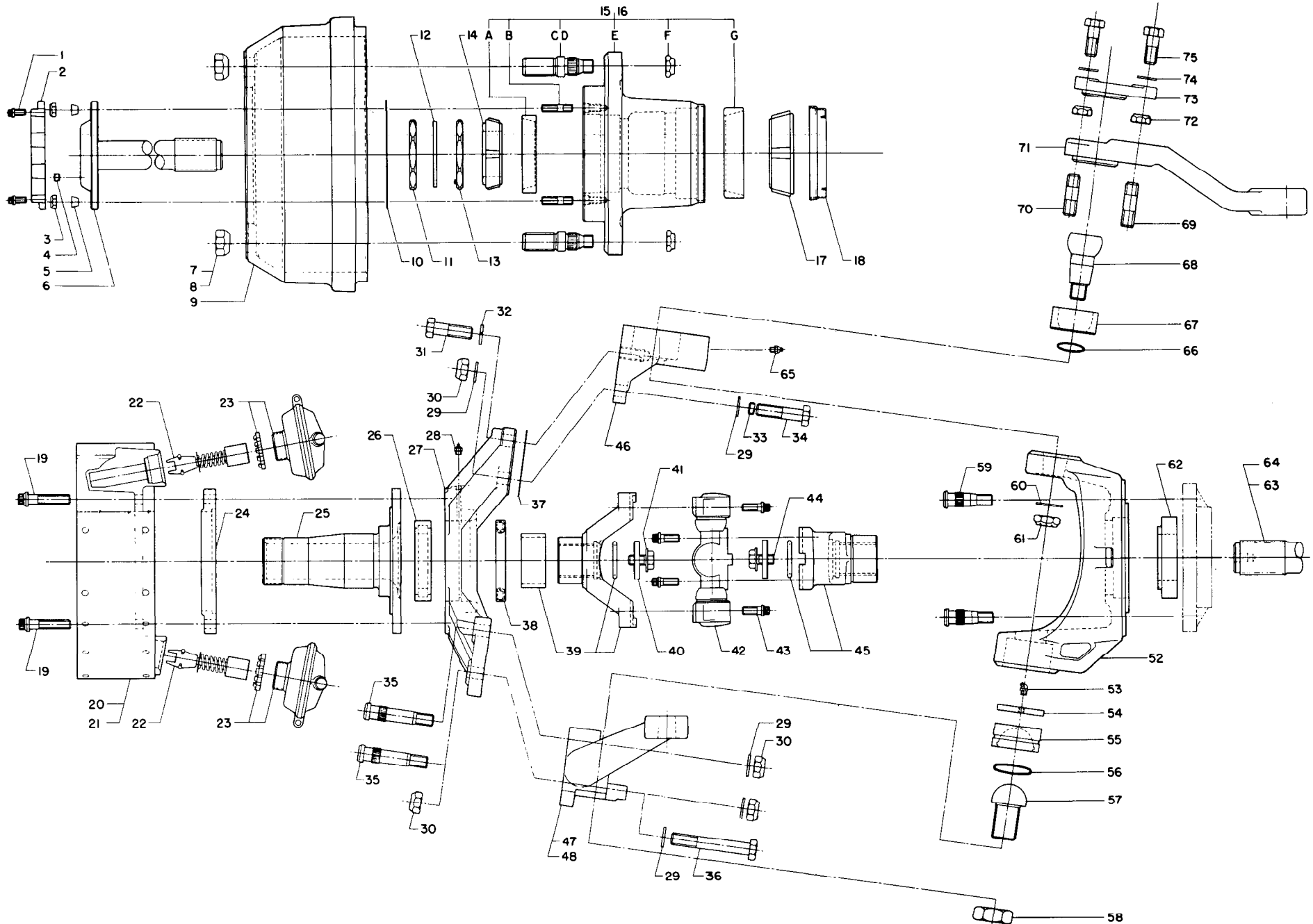
Steerable Drive End Assembly



Steerable Drive End Assembly

ITEM	PART NO.	DESCRIPTION	QUANTITY PER AXLE END		ITEM	PART NO.	DESCRIPTION	QUANTITY PER AXLE END	
			L.H.	R.H.				L.H.	R.H.
1	724 426	Capscrew, Hub Cap	2	2	E	482 362	Hub, Wheel B.C.)	1	1
2	483 257	Hub Cap	1	1		482 363	Hub, Wheel B.C.)	1	1
3	688 493	Nut, Outer Shaft	10	10	F	688 289	Nut, Wheel Stud Lock	10	10
4	758 232	Plug, Axle Flange	1	1	G	233 397	Bearing Cup, Inner	1	1
5	736 348	Dowel, Drive Stud	10	10	17	233 396	Bearing Cone, Inner	1	1
6	769 268	Shaft Outer	1	1	18	732 334	Seal, Hub	1	1
7	688 259	Nut, Wheel RH	—	10	19	724 665	Screw, Wheel Spindle	8	8
8	688 262	Nut, Wheel LH	10	—	20	272 395	Brake Assembly Left Hand	1	—
9	378 278	Drum 15 x 5 Brake	1	1			(12" Wedge)		
		11¼ Bolt Circle) }				272 397	Brake Assembly Left Hand	—	1
	378 279	Drum, 15 x 5 Brake					(14" Wedge)		
		13 ³ / ₁₆ Bolt Circle)			21	272 396	Brake Assembly Right Hand		
10	427 257	Gasket, Outer Axle Shaft	1	1			(12" Wedge)		
11	688 242	Nut, Wheel Bearing Lock	1	1		272 398	Brake Assembly Right Hand		
12	927 278	Washer, Wheel Bearing Lock	1	1			(14" Wedge)		
13	688 239	Nut, Wheel Bearing Lock	1	1	22		Wedge Assembly (Included	—	—
		(With Dowel)					with Items 20 and 21)		
14	233 242	Bearing Cone, Outer	1	1	23	243 264	Actuator & Locknut, Brake	2	2
15	—	*Hub Assembly Left Hand	1	—	24	736 936	Ring, Brake to Spindle	1	1
		11¼ Bolt Circle) }			25	774 292	Spindle	1	1
	—	*Hub Assembly Left Hand			26	233 264	Bearing, Outer Axle Shaft	1	1
		13 ³ / ₁₆ Bolt Circle)			27	965 892	Yoke, Spindle	1	1
16	—	*Hub Assembly Right Hand	—	1	28	836 235	Vent	1	1
		11¼ Bolt Circle) }			29	927 668	Washer, Plain Hardened,	8	8
	—	*Hub Assembly Right Hand			30	688 689	Nut, Kingpin Bracket	6	6
		13 ³ / ₁₆ Bolt Circle)			31	265 986	Bolt, Upper Kingpin Bracket	2	2
A	233 239	Bearing Cup, Outer	1	1			Mounting Long)		
B	788 232	Stud, Outer Axle	10	10	32	927 293	Washer, Spring Lock,	2	2
C	788 494	Stud, Wheel LH Short	10	—	33	265 659	Bolt, Upper Kingpin Bracket	1	1
		(1% from Hub out) }					Steering Stop Long)		
	788 498	Stud, Wheel LH Long			34	265 673	Bolt, Upper Kingpin Bracket	1	1
		(2% from Hub out)					Mounting (3 Long)		
D	788 495	Stud, Wheel RH Short	—	10			See note 2 Table of Contents.		
		1¾ from Hub out) }							
	788 499	Stud, Wheel RH Long							
		(2% from Hub out)							

Steerable Drive End Assembly



Steerable Drive End Assembly

ITEM	PART NO	DESCRIPTION	QUANTITY PER AXLE END		ITEM	PART NO.	DESCRIPTION	QUANTITY PER AXLE END	
			L.H.	R.H.				L.H.	R.H.
35	788 542	Stud, Lower Kingpin Bracket	3	3	60	927 649	Washer, Upper Kingpin	1	1
36	265 789	Bolt, Lower Kingpin Bracket	1	1	61	688 274	Nut, Upper Kingpin	1	1
37	744 299	Shim, Upper Kingpin Bracket	1	1	62	732 305	Seal, Assembly Inner Drive Yoke	1	1
38	732 333	Seal, Outer Axle Shaft	1	1	63	—	*Shaft, Inner Axle	—	—
39	9651888	Yoke, Outer Drive with Ring and Bearing Race	1	1	64	—	*Shaft, Inner Axle	—	—
40	927 1776	Washer, Drive Yoke Retaining	2	2	65	358 222	Fitting Grease	1	1
41	675 016	O-Ring, Drive Yoke Sealing	2	2	66	675 222	O-Ring, Upper Kingpin	1	1
42	277 269	Cross & Bearing Assembly	1	1	67	234 239	Bearing, Upper Kingpin	1	1
43	724 574	Capscrew, Cross & Bearing	8	8	68	225 278	Ball Stud Upper Kingpin	1	1
44	265 379	Bolt, Axle Shaft	2	2	69	788 472	**Stud, Steering Arm (Long)	—	—
45	9651887	Yoke, Inner Drive with Ring	1	1	70	788 473	**Stud, Steering Arm (Short)	—	—
46	273 647	Bracket, Upper Kingpin (Plain)	1	1	71	—	**Steering Arm	—	—
47	273 653	Bracket, Lower Kingpin LH	1	—	72	688 687	**Nut, Steering Arm Mounting	—	—
48	273 654	Bracket, Lower Kingpin RH	—	1	73	235 383	**Cap, Upper Kingpin	—	—
49		(NOT USED)			74	927 293	**Washer, Upper Kingpin Cap	—	—
50		(NOT USED)			75	265 269	**Bolt, Upper Kingpin Cap	—	—
51		(NOT USED)							
52	965 894	Yoke, Suspension	1	1					
53	358 223	Fitting 45° Grease	1	1					
54	793 266	Disc Lower Kingpin Bearing	1	1					
55	234 242	Bearing, Lower Kingpin	1	1					
56	675 229	O-Ring, Lower Kingpin	1	1					
57	225 277	Ball Stud Lower Kingpin	1	1					
58	688 578	Nut, Lower Kingpin	1	1					
59	788 525	Stud, Suspension Yoke	8	8					

*See note 2, Table of Contents (axle shafts may differ from left to right according to position of differential.)

**These parts are listed on axle assembly shown here for reference only.

NOTES

PARTS MANUAL
SDA 21

Steerable Drive Axle Assembly.....50-51
Steerable Drive End Assembly.....52-55

To Use This Book:

- 1. Refer to the exploded view which illustrates the needed part.
- 2. Find the required part in the exploded view and then note the item number or numbers.
- 3. Locate the item number in the parts list for part number, description, and quantity.

Note:

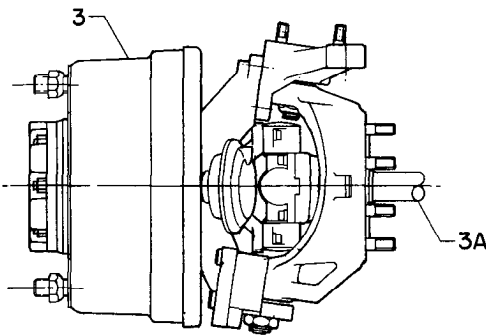
- 1. Before ordering parts for a Fabco Steerable Drive Axle, please refer to the Fabco nameplate located on the left rear of the axle housing. Specify model number, serial number, ratio or other information that is on the nameplate when ordering parts.
- 2. Some parts such as the steerable drive ends, the axle housing and the steering arm are unique to customer specifications. Our parts personnel can refer to the specific Bill of Material to determine part numbers for these parts.

Additional Parts Manuals:

Single Reduction Differential Parts Manual
Double Reduction Differential Parts Manual
Drive Thru Style Differential Parts Manual
Air Brake Parts Manual

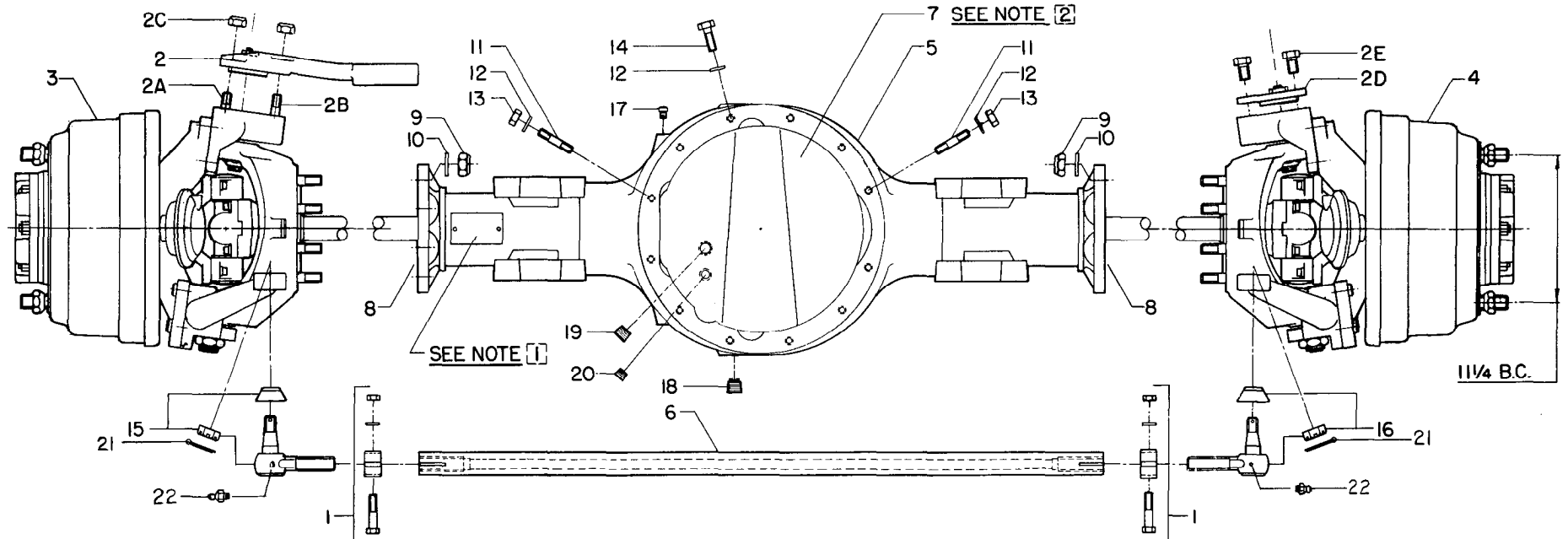
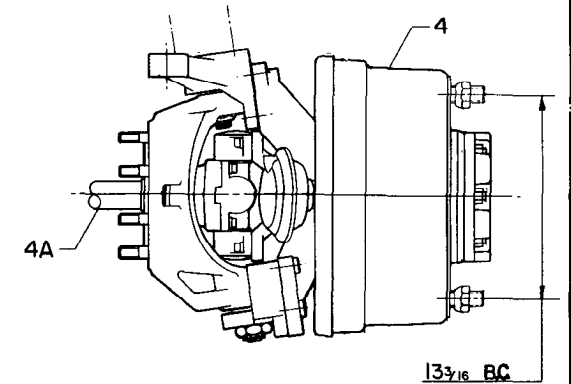
Part numbers contained in this manual were in effect at the time the manual was approved for printing and are subject to change without notice or liability. Fabco reserves the right to change parts at any time.

Steerable Drive Axle Assembly



NOTES:

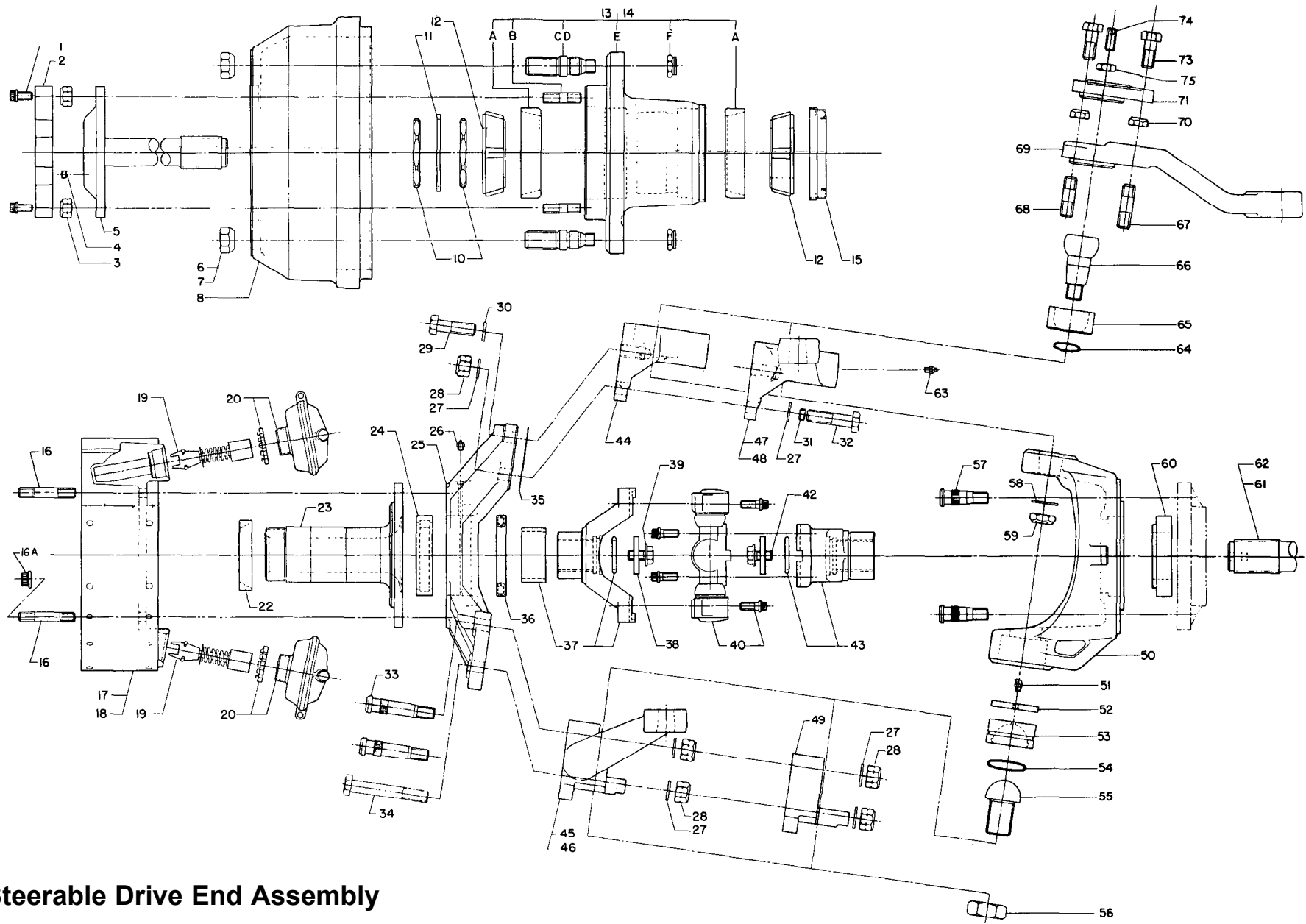
- 1 AXLE NAME PLATE LISTS MODEL NUMBER, SERIAL NUMBER AND PART NUMBER. THIS DATA SHOULD BE RECORDED AND USED WHEN ORDERING PARTS.
- 2 REFER TO THE DIFFERENTIAL CARRIER PART MANUAL FOR INFORMATION RELATING TO THE DIFFERENTIAL CARRIER ASSEMBLY.
- 3 ITEMS 2 THROUGH 7 ARE VARIABLE AND INTERCHANGEABLE TO SUIT CUSTOMER REQUIREMENTS.



Steerable Drive Axle Assembly

ITEM	PART NO.	DESCRIPTION	QUANTITY PER AXLE		
1	255 427	Clamp Assembly Tie Rod	2		
2	—	*Arm, Steering	A/R		
2A	788 554002	*Stud, Steering Arm Mounting (Short)	A/R		
2B	788 554001	*Stud, Steering Arm Mounting (Long)	A/R		
2C	688 275	*Nut, Steering Arm Mounting	A/R		
2D	235 383	*Cap, Upper Kingpin	A/R		
2E	265 998	*Bolt, Upper Kingpin Cap	A/R		
3	—	*End, Left Steerable Drive			
3A	—	*Shaft, Left Inner Axle	1		
4	—	*End, Right Steerable Drive			
4A	—	*Shaft, Right Inner Axle	1		
5	—	*Housing, Axle	1		
6	—	*Tube, Tie Rod	1		
7	—	*Differential Carrier Assembly	1		
9	688 689	Nut, Suspension Yoke to Axle Housing	16		
10	927 668	Washer, Suspension Yoke to Axle Housing	16		
11	788 533001	Stud, Differential Carrier Mounting	2		
12	927 276	Lockwasher, Differential Mounting	12		
13	688 265	Nut, Differential Mounting Studs	2	R381 DIFF.	22 DIFF.
14	265 222	Capscrew, Differential Mounting, 2 Long			1
	265 223	Capscrew, Differential Mounting, 1¾ Long		10	6
15	363 272	End, Left Tie Rod	1		
16	363 273	End, Right Tie Rod	1		
17	836 222	Fitting, Axle Housing Vent	1		
18	758 274	Plug, Axle Housing Magnetic Drain	1		
19	758 369	Plug, Dryseal, Axle Housing Oil Level, Magnetic	1		
20	758 293	Plug, Dryseal	1		
21	749 225	Cotter Pin	1		
22	358 222	Grease Fitting	2		
	728 232001	Loctite 515 Gasket Eliminator	6 ml Tube		

*See Note 2, Table of Contents.



Steerable Drive End Assembly

Steerable Drive End Assembly

			QUANTITY PER AXLE					QUANTITY PER AXLE	
ITEM	PART NO.	DESCRIPTION	L.H.	R.H.	ITEM	PART NO.	DESCRIPTION	L.H.	R.H.
1	724 426	Capscrew, Hub Cap	2	2	A	233 462	Bearing Cup, Inner & Outer	2	2
2	483 256	Hub Cap	1	1	B	788 553 002	Stud, Outer Axle	8	8
3	688 292	Nut, Outer Shaft	8	8	C	788 544 003	Stud, Wheel, LH, Short (1 3/8 From Hub Out)	10	—
4	758 232	Plug, Axle Flange	1	1		788 544 001	Stud, Wheel, LH, Long (2 1/8 From Hub Out)		
5	769 393	Shaft, Outer	1	1	D	788 544 004	Stud, Wheel, RH, Short (1 3/8 From Hub Out)	—	10
6	688 262	Nut, Wheel LH, 11 1/4 B.C.	10	—		788 544 002	Stud, Wheel, RH, Long (2 1/8 From Hub Out)		
	688 667	Nut, Wheel LH, 13 3/16 B.C.HD			E	482 367	Hub, Wheel (11 1/4 B.C.)	1	1
7	688 259	Nut, Wheel RH, 11 1/4 B.C.	—	10		482 368	Hub, Wheel (13 3/16 B.C.)		
	688 668	Nut, Wheel RH, 13 3/16 B.C.HD			F	688 737	Nut, Wheel Stud Back	10	10
8	378 286	Drum, 15 x 6 Brake (11 1/4 Bolt Circle)	1	1	15	732 373	Seal, Hub	1	1
	378 288	Drum, 15 x 6 Brake (13 3/16 Bolt Circle)			16A	688 733	Nut, Brake Mtg. Stud	8	8
10	688 699	Nut, Wheel Bearing Lock	2	2	16	788 553 003	Stud Brake Mtg.	8	8
11	927 769	Washer, Wheel Bearing Lock	1	1	17	272 446	Brake Ass'y., LH	1	—
12	233 459	Bearing Cone, Inner & Outer	2	2	18	272 447	Brake Ass'y., RH	—	1
13	482*061 001	*Hub, Ass'y., LH, Short Studs (11 1/4 B.C.)	1	—	19		Wedge, 12° (Part of Brake Brake Assembly)	REF	REF
	482*061 005	*Hub, Ass'y., LH, Short Studs (13 3/16 B.C.)			20	243 264	Actuator & Locknut, Brake	2	2
	482*061 003	*Hub, Ass'y., LH, Long Studs (11 1/4 B.C.)			22	736 967	Spindle	1	1
	482*061 007	*Hub, Ass'y., LH, Long Studs (13 3/16 B.C.)			23	774 295	Bearing, Outer Axle Shaft	1	1
14	482*061 002	*Hub, Ass'y., RH, Short Studs (11 1/4 B.C.)	—	1	24	233 264	Yoke, Spindle	1	1
	482*061 006	*Hub, Ass'y., RH, Short Studs (13 3/16 B.C.)			25	965 892	Vent	1	1
	482*061 004	*Hub, Ass'y., RH, Long Studs (11 1/4 B.C.)			26	836 235	Washer, Plain Hardened, 3/4	8	8
	482*061*008	*Hub, Ass'y., RH, Long Studs (13 3/16 B.C.)			27	927 668	Nut, Kingpin Bracket	6	6
		*See Note 2 Table of Contents			28	688 689	Bolt, Upper Kingpin Bracket Mounting (2 1/2 Long)	2	2
					29	265 986	Washer, Spring Lock, 3/4	2	2
					30	927 293			

Steerable Drive End Assembly

Steerable Drive End Assembly Cont'd.

ITEM	PART NO.	DESCRIPTION	QUANTITY PER AXLE		ITEM	PART NO.	DESCRIPTION	QUANTITY PER AXLE	
			L.H.	R.H.				L.H.	R.H.
31	265 924	Bolt, Upper Kingpin Bracket Steering Stop (4 Long)	1	1	56	688 578	Nut, Lower Kingpin	1	1
32	265 673	Bolt, Upper Kingpin Bracket Mounting (3 Long)	1	1	57	788 538 006	Stud, Suspension Yoke	8	8
33	788 538 014	Stud, Lower Kingpin Bracket	3	3	58	927 649	Washer, Upper Kingpin	1	1
34	265 789	Bolt, Lower Kingpin Bracket	1	1	59	688 274	Nut, Upper Kingpin	1	1
35	744 299	Shim, Upper Kingpin Bracket	1	1	60	732 305	Seal, Ass'y., Inner Drive Yoke	1	1
36	732 333	Seal, Outer Axle Shaft	1	1	61	—	*Shaft, Inner Axle	—	—
37	9651939	Yoke, Outer Drive w/Ring & Bearing Race	1	1	62	—	*Shaft, Inner Axle	—	—
38	9271776	Washer, Drive Yoke Retaining	2	2	63	358 222	Fitting, Grease	1	1
39	675 016	O-Ring, Drive Yoke Sealing	2	2	64	675 222	O-Ring, Upper Kingpin	1	1
40	277 265	Cross & Bearing Assembly	1	1	65	234 239	Bearing, Upper Kingpin	1	1
42	265 989	Bolt, Axle Shaft	2	2	66	225 278	Ball Stud, Upper Kingpin	1	1
43	9651938	Yoke, Inner Drive w/Ring	1	1	67	788 554 001	**Stud, Steering Arm (Long)	—	—
44	273 647	Bracket, Upper Kingpin (Plain)	1	1	68	788 554 002	**Stud, Steering Arm (Short)	—	—
45	273 653	Bracket, Lower Kingpin, LH	1	—	69	—	*Steering Arm	—	—
46	273 654	Bracket, Lower Kingpin, RH	—	1	70	688 275	*Nut, Steering Arm Mounting	—	—
47	273 675	Bracket, Upper Kingpin, LH	1	—	71	235 383	*Cap, Upper Kingpin	—	—
48	273 676	Bracket, Upper Kingpin, RH	—	1	73	265 998	*Bolt, Upper Kingpin Cap	—	—
49	273 662	Bracket, Lower Kingpin, Plain	1	1	74	724 723	Screw, Set, Soc. HD	1	1
50	965 937	Yoke, Suspension	1	1	75	688 636	Nut, Jam, 5/8-18	1	1
51	358 223	Fitting, 45°, Grease	1	1	<p>*See Note 2, Table of Contents (axle shafts may differ from left to right according to position of differential.</p> <p>**These parts are listed on axle assembly shown here for reference only.</p>				
52	793 266	Disc, Lower Kingpin Bearing	1	1					
53	234 242	Bearing, Lower Kingpin	1	1					
54	675 229	O-Ring, Lower Kingpin	1	1					
55	225 277	Ball Stud, Lower Kingpin	1	1					